



Featuring:

- Security Fixture (Penal-Ware)
- Heavy Duty Fixture (Dura-Ware)
- Mop Sink/Shower Bases
- Group Wash (Wash-Ware/Meridian)
- Showers (Shower-Ware)
- Fixture Valves (Master-Trol, Time-Trol, Air-Control)
- Hydrants/Boxes

Acorn Abridged Catalog

(formerly Quick Reference Guide)

Third Edition (2014)



Est. 1954

ACORN ENGINEERING COMPANY

Manufacturer of Engineered Products

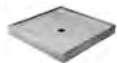




TABLE OF CONTENTS

Third Edition (2014)

Combys (Security Toilet/Lavy Combinations)	3
Security Toilet/Lavy Combinations	
Toilets	7
Urinals	13
Lavatories	17
Sink, Basins	
Service Sinks, Mop Sinks, & Clinic Sink Base	21
Group Wash	24
Hand Wash Station, Wash Fountain	
Drinking Fountain	30
[Dura-Ware & Penal-Ware Only]	
Showers	32
[Commercial & Security]	
Shower Bases	40
Accessories	45
Mirror, Shelves, Grab Bars, Folding Seats	
Fixture Valves	49
Air-Control, Master-Trol, Time-Trol	
Hydrants/Boxes	52





Please visit www.acorneng.com for most current specifications.

COMBYS



All products in this category are recyclable and manufactured with reclaimed materials



All products in this category are vandal resistant as they are constructed of heavy gage stainless steel.



All products in this section meet with lead free requirements where the wetted surface of this product contacted by water contains less than 0.25% lead.

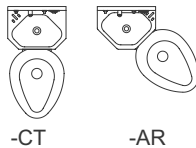


** With low flush valve options and/or -VAC options, all products on this page contribute to minimal water usage



-AL

Penal-Ware® Model 1415 15-inch comby for rear mount chase application



-CT

-AR

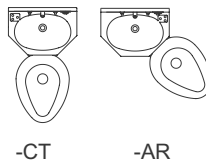
15-inch wide, 14 gage 304 stainless steel rear mounted cabinet with integral lavy/toilet. Configurations include Off-Floor, Wall Outlet (-1), On-Floor, Wall Outlet (-2), On-Floor, Floor Outlet (-3). Also, specify -AL, -AR, -CT

Image shown: 1415-AL-2-BP-04-PHRF-FV



-AL

Penal-Ware® Model 1418 18-inch comby for rear mount chase application

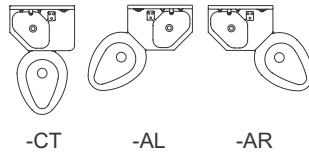


-CT

-AR

18-inch wide, 14 gage 304 stainless steel cabinet with integral lavy/toilet. Configurations include Off-Floor, Wall Outlet (-1), On-Floor, Wall Outlet (-2), On-Floor, Floor Outlet (-3)

Image shown: 1418-AL-2-BP-04-PHF-FV



-CT

-AL

-AR

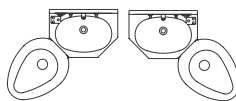
VARIATIONS

Model	Description
1418	Rear mount comby with oval lavy bowl; specify -AL, -AR, -CT
1418LMB	Rear mount comby with multi-sided lavy bowl; specify -AL, -AR, -CT



-CT

Penal-Ware® Model 1418FA 18-inch comby with front access

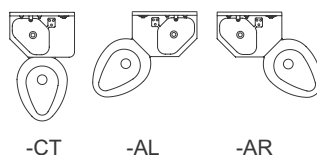


-AL

-AR

18-inch wide, 14 gage 304 stainless steel cabinet with integral lavy/toilet. Configurations include On-Floor, Wall Outlet (-2), On-Floor, Floor Outlet (-3)

Image shown: 1418FA-CT-2-BP-04-FVH



-CT

-AL

-AR

VARIATIONS

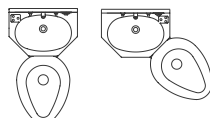
Model	Description
1418FA	Front mount comby with oval lavy bowl; specify -AL, -AR, -CT
1418LMBFA	Front mount comby with multi-sided lavy bowl; specify -AL, -AR, -CT



-AL

Penal-Ware® Model R1418

Replacement 18-inch comby for rear mount chase application



-CT

-AR

18-inch wide, 14 gage 304 stainless steel cabinet with integral lavy/toilet and oval lavy bowl. Configurations include Off-Floor, Wall Outlet (-1), On-Floor, Wall Outlet (-2), On-Floor, Floor Outlet (-3); Also specify -AL, -AR or -CT

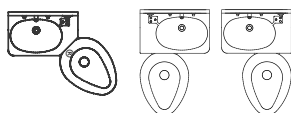
Image shown: R1418-AL-2-BP-04-PHF-FV



-AL

Penal-Ware® Model 1420

20-inch comby for rear mount, chase application



-AR

-LO

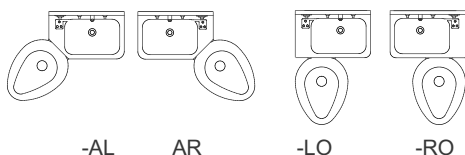
-RO

20-inch wide, 14 gage 304 stainless steel cabinet with integral lavy/toilet. Configurations include Off-Floor, Wall Outlet (-1), On-Floor, Wall Outlet (-2), On-Floor, Floor Outlet (-3)

Image shown: 1420-AL-2-BP-04-PHC-FV

VARIATIONS

Model	Description
1420	Rear mount comby with oval lavy bowl with choice of angled toilet (use -AL or -AR to specify) or offset toilet (use -LO or -RO to specify)
1420LRB	Rear mount comby with lavy bowl with choice of angled toilet (use -AL or -AR to specify) or offset toilet (use -LO or -RO to specify)



-AL

-AR

-LO

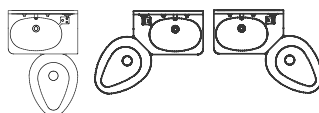
-RO



-LO

Penal-Ware® Model 1420FA

20-inch comby with front access



-RO

-AL

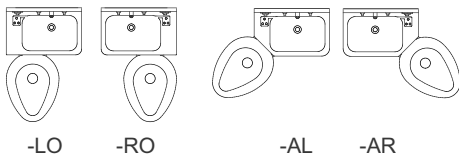
-AR

20-inch wide, 14 gage 304 stainless steel cabinet with integral lavy/toilet. Configurations include On-Floor, Wall Outlet (-2), or On-Floor, Floor Outlet (-3)

Image shown: 1420FA-LO-2-BP-04-PH-FVH

VARIATIONS

Model	Description
1420FA	Front access/mount comby with oval lavy bowl (standard) with choice of angled toilet (use -AL or -AR to specify) or offset toilet (use -LO or -RO to specify)
1420LRBFA	Front access/mount comby with rectangular lavy bowl with choice of angled toilet (use -AL or -AR to specify) or offset toilet (use -LO or -RO to specify)



-LO

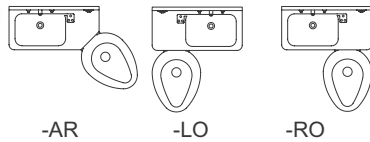
-RO

-AL

-AR



Penal-Ware® Model 1426 26-inch comby for rear mounted chase application

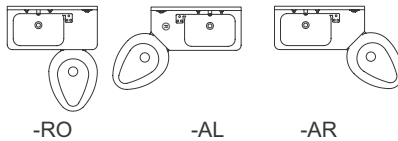


26-inch wide, 12 gage 304 stainless steel cabinet with integral lavy/toilet; rectangular lavy bowl. Configurations include Off-Floor, Wall Outlet (-1), On-Floor, Wall Outlet (-2), On-Floor, Floor Outlet (-3). Also, specify angled toilet (use -AL or -AR to specify) or offset toilet (use -LO or -RO to specify).

Image shown: 1426-AL-2-BP-04-FV-PHRF



Penal-Ware® Model 1426FA 26-inch comby with front access



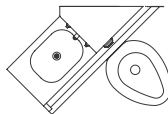
26-inch wide, 12 gage 304 stainless steel cabinet with integral lavy/toilet; rectangular lavy bowl. Configurations include On-Floor, Wall Outlet (-2), or On-Floor, Floor Outlet (-3). Also, specify angled toilet (use -AL or -AR to specify) or offset toilet (use -LO or -RO to specify).

Image shown: 1426FA-LO-2-BP-04-FVH-PH



-AL

Penal-Ware® Model 1432 ADA compliant comby with angled lavy & toilet for rear mounted chase application



-AR

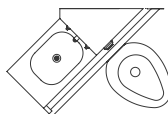
14 gage 304 stainless steel cabinet with integral lavy/toilet and grab bar. Configurations include Off-Floor, Wall Outlet (-1), On-Floor, Wall Outlet (-2), and On-Floor, Floor Outlet (-3); also angled toilet (specify -AL or -AR)

Image shown: 1432-AL-2-BP-04-M-FVH



-AL

Penal-Ware® Model 1432FA ADA compliant comby with angled lavy & toilet with front access



-AR

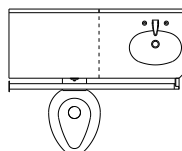
14 gage 304 stainless steel cabinet with integral lavy/toilet and grab bar; Configurations include On-Floor, Wall Outlet (-2), and On-Floor, Floor Outlet (-3); also angled toilet (specify -AL or -AR)

Image shown: 1432FA-AL-2-BP-04-M-FVH



-RO

Penal-Ware® Model 1435 ADA compliant 35-inch comby with offset toilet



-LO

35-inch wide, 14 gage 304 stainless steel cabinet with integral lavy/toilet and grab bar; Configurations include On-Floor, Wall Outlet (-2), or On-Floor, Floor Outlet (-3); also offset toilet (specify -LO or -RO)

Image shown: 1435-LO-2-DMS-04-M-FVH



COMBYS

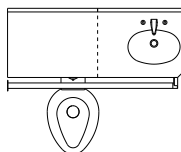
Please visit www.acorneng.com for most current specifications.



-RO

Penal-Ware® Model 1435FA

ADA compliant 35-inch comby with offset toilet and front access



-LO

35-inch wide, 14 gage 304 stainless steel cabinet with integral lavy/toilet and grab bar; Configurations include On-Floor, Wall Outlet (-2), or On-Floor, Floor Outlet (-3); also offset toilet (specify -LO or -RO)

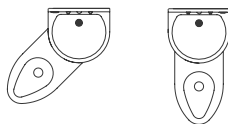
Image shown: 1435FA-LO-2-DMS-04-M-FVH



-AR

Penal-Ware® Model 1440

18-inch "suicide resistant" comby for rear mount chase application



-AL

-CT

18-inch wide, 14 gage 304 stainless steel cabinet with integral lavy/toilet. Configurations include On-Floor, Wall Outlet (-2), On-Floor, Floor Outlet (-3)

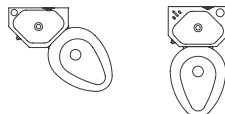
Image shown: 1440-AR-2-BPH-03



-AL

Penal-Ware® Model 1485

15-inch economy comby for rear mount chase application



-AR

-CT

15-inch wide, 16 gage 304 stainless steel cabinet with integral lavy/toilet; On-Floor, Wall Outlet (-2)

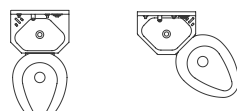
Image shown: 1485-AL-2-BPH-03-FV-PHRF



-AL

Replace-Ware Model 3315

Replacement 15-inch comby for rear mount, chase application



-CT

-AR

15-inch wide, 14 gage 304 stainless steel cabinet with integral lavy/toilet; designed to replace existing aluminum fixtures including but not limited to those by Aluminum Plumbing Fixture Corp (Super Secur);

Configurations include Off-Floor, Wall Outlet (-1), On-Floor, Wall Outlet (-2), On-Floor, Floor Outlet (-3); also specify angled toilet (-AL,-AR,-CT)

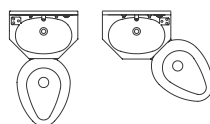
Image shown: 3315-AL-2-BP-4-PHR



-AL

Replace-Ware Model 3318

Replacement 18-inch comby for rear mount chase application



-CT

-AR

18-inch wide, 14 gage 304 stainless steel cabinet with integral lavy/toilet; designed to replace existing aluminum fixtures including but not limited to those by Aluminum Plumbing Fixture Corp (Super Secur); Configurations include Off-Floor, Wall Outlet (-1), On-Floor, Wall Outlet (-2), On-Floor, Floor Outlet (-3); also specify angled toilet (-AL,-AR,-CT)

Image shown: 3318-AL-2-BP-4-PHC



Please visit www.acorneng.com for most current specifications.

TOILETS



All products in this category are recyclable and manufactured with reclaimed materials



With low flush valve options and/or -VAC options, all products in this category contribute to minimal water usage



Penal-Ware® Model 1675 **Off-floor Blowout Jet toilet for rear mount chase application**

When mounted in proper ADA configuration



14 gage 304 stainless steel off-floor Blowout Jet toilet

Image shown: 1675-W-1

MODEL VARIATIONS

1675-T-1 Top Supply toilet



1675-W-1 Wall Supply toilet



Penal-Ware® Model 1679 **Off-floor compact Blowout Jet toilet for rear mount chase application**

When mounted in proper ADA configuration



14 gage 304 stainless steel off-floor Blowout Jet toilet configured for a concealed wall supply flush valve (not available in top supply)

Image shown: 1679-W-1



Penal-Ware® Model 1680 Series **Off-floor Siphon Jet toilet for rear mount chase application**

When mounted in proper ADA configuration



14 gage 304 stainless steel off-floor Siphon Jet toilet

Image shown: 1680-W-1

MODEL VARIATIONS

1680-T-1 Top Supply toilet



1680-W-1 Wall Supply toilet



Penal-Ware® Model 1684 Series **On-floor, wall waste Siphon Jet toilet for rear mount chase application**

ADA configuration available (must specify)



14 gage 304 stainless steel on-floor Siphon Jet toilet with wall waste outlet

Image shown: 1684-W-2

MODEL VARIATIONS

1684-T-2 Top Supply toilet



1684-W-2 Wall Supply toilet



Penal-Ware® Model 1685 Series **On-floor, wall waste Blowout Jet toilet for rear mount chase application**

ADA configuration available (must specify)



14 gage 304 stainless steel on-floor Blowout Jet toilet with wall waste outlet

Image shown: 1685-W-2

MODEL VARIATIONS

1685-T-2 Top Supply toilet



1685-W-2 Wall Supply toilet

TOILETS

Please visit www.acorneng.com for most current specifications.



Penal-Ware® Model 1695 Series **On-floor, floor waste Siphon Jet toilet for rear mount chase application**



14 gage 304 stainless steel on-floor Siphon Jet toilet with floor waste outlet

Image shown: 1695-W-3

MODEL VARIATIONS

1695-T-3	Top Supply toilet
1695-W-3	Wall Supply toilet



Penal-Ware® Model 1696 **Off-floor econo Blowout Jet toilet for rear mount chase application**

When mounted in proper ADA configuration



14 gage 304 stainless steel off-floor Blowout Jet toilet configured for a concealed wall supply flush valve (not available in top supply)

Image shown: 1696-W-1



Penal-Ware® Model 1698 **In-floor, floor waste Squat Toilet**

18 gage 304 stainless steel one piece in-floor squat toilet

Image shown: 1698-W-3



Penal-Ware® Model 1699 **In-floor, floor waste detox toilet**

14 gage 304 stainless steel detox toilet with 360° continuous flushing rim, bar grate with 3/8" diameter welded in bars

Image shown: 1699-W-3



TOILETS



Dura-Ware® Model 2100 Series **Off-floor Blowout Jet toilet for front wall mount application**

When mounted in proper ADA configuration



16 gage 304 stainless steel off-floor Blowout Jet toilet

Image shown: 2100-W-1-CN

MODEL VARIATIONS

2100-T-1	Top Supply toilet
2100-W-1	Wall Supply toilet



Dura-Ware® Model R2100 Series **Stainless steel replacement for most Vitreous China off-floor Blowout Jet toilets**

When mounted in proper ADA configuration



16 gage 304 stainless steel front mounted off-floor Blowout Jet toilet with wall waste outlet

Image shown: R2100-W-1

MODEL VARIATIONS

R2100-T-1	Top Supply toilet
R2100-W-1	Wall Supply toilet



Dura-Ware® Model 2105 Series **Off-floor Siphon Jet toilet for front wall mount application**

When mounted in proper ADA configuration



16 gage 304 stainless steel off-floor Siphon Jet toilet

Image shown: 2105-W-1-CN

MODEL VARIATIONS

2105-T-1	Top Supply toilet
2105-W-1	Wall Supply toilet
2105BAR-T-1	Top Supply bariatric toilet reinforced housing to withstand up to 1000lbs with optional carrier
2105BAR-W-1	Wall Supply bariatric toilet reinforced housing to withstand up to 1000lbs with optional carrier



Dura-Ware® Model R2105 Series **Stainless steel replacement for most Vitreous China off-floor Siphon Jet toilets**

When mounted in proper ADA configuration



16 gage 304 stainless steel front mounted off-floor Siphon Jet toilet with wall waste

Image shown: R2105-W-1

MODEL VARIATIONS

R2105-T-1	Top Supply toilet
R2105-W-1	Wall Supply toilet

TOILETS

Please visit www.acorneng.com for most current specifications.



Dura-Ware® Model 2110 Series ADA configuration available (must specify)

On-floor, wall waste Blowout Jet toilet front wall mount application



16 gage 304 stainless steel on-floor Blowout Jet toilet with wall waste outlet

Image shown: 2110-W-2

MODEL VARIATIONS

2110-T-2 Top Supply toilet



2110-W-2 Wall Supply toilet



Dura-Ware® Model 2115 Series ADA configuration available (must specify)

On-floor, wall waste blowout Jet toilet front wall mount application



16 gage 304 stainless steel on-floor Siphon Jet toilet with wall waste outlet

Image shown: 2115-W-2

MODEL VARIATIONS

2115-T-2 Top Supply toilet



2115-W-2 Wall Supply toilet



Dura-Ware® Model R2115 Series

Stainless steel replacement for most Vitreous China on-floor Siphon Jet toilet with wall waste

16 gage 304 stainless steel front mounted on-floor Siphon Jet toilet with wall waste outlet

Image shown: R2115-W-2

MODEL VARIATIONS



R2115-T-2 Top Supply toilet



R2115-W-2 Wall Supply toilet



Dura-Ware® Model 2120 Series ADA configuration available (must specify)

On-floor, floor waste Siphon Jet toilet front wall mount application



16 gage 304 stainless steel on-floor Siphon Jet toilet with floor waste outlet

Image shown: 2120-W-3-CN

MODEL VARIATIONS



2120-T-3 Top Supply toilet



2120-W-3 Wall Supply toilet



TOILETS



Dura-Ware® Model 2125A Series On-floor bariatric toilet



14 gage 304 stainless steel on-floor toilet capable bearing loads of up to 5,000 lbs; Specify –FM (front wall mount) or –RM (rear mount/mounting from behind wall)

Image shown: 2125A-W-2-EG10-HS-BJ-BL

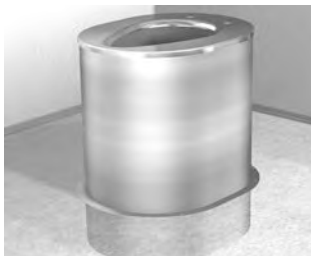
MODEL VARIATIONS

Top Supply	Wall Supply
------------	-------------

2125-T-2	2125-W-2	Bariatric toilet with wall waste outlet
----------	----------	---



2125-T-3	2125-W-3	Bariatric toilet with floor waste outlet
----------	----------	--



Dura-Ware® Model 2131 ADA compliant waterless toilet stool



18 gage 304 stainless steel waterless toilet stool (16-1/2" x 20-5/8" oval) 14 gage integral toilet seat, 1" wide floor flange

Image shown: 2131



Meridian Model 2140 Series Blowout Jet toilet

ADA configuration available (must specify)



16 gage 304 stainless steel Blowout Jet Toilet; Specify –FM (front wall mount) or –RM (rear mount/mounting from behind wall)

Image shown: 2140-W-2-RM

MODEL VARIATIONS

Top Supply	Wall Supply
------------	-------------

2140-T-1	2140-W-1	Off-floor toilet with wall waste outlet
----------	----------	---

2140-T-2	2140-W-2	On-floor toilet with wall waste outlet
----------	----------	--



Meridian Model 2141 Series Siphon Jet toilet

ADA configuration available (must specify)



16 gage 304 stainless steel Siphon Jet toilet; Specify –FM (front wall mount) or –RM (rear mount/mounting from behind wall)

Image shown: 2141-W-2-RM

MODEL VARIATIONS

Top Supply	Wall Supply
------------	-------------

2141-T-1	2141-W-1	Off-floor toilet with wall waste outlet
----------	----------	---

2141-T-2	2141-W-2	On-floor toilet with wall waste outlet
----------	----------	--

2141-T-3	2141-W-3	On-floor toilet with floor waste outlet
----------	----------	---

TOILETS

Please visit www.acorneng.com for most current specifications.





Meridian Model R2141-3 Series Stainless steel replacement for most Vitreous China Siphon Jet toilets with floor waste

16 gage 304 stainless steel front mounted, on-floor Siphon Jet toilet with floor waste outlet

Image shown: R2141-T-3

MODEL VARIATIONS

	R2141-T-3	Top Supply
	R2141-W-3	Wall Supply



Replace-Ware Model 3330 Series Replacement off-floor Blowout Jet toilet

ADA configuration available (must specify)



14 gage 304 stainless steel off-floor Blowout Jet toilet with wall waste outlet

Image shown: 3331-W-1-CN

MODEL VARIATIONS

Top Supply	Wall Supply	
3330-T-1	3330-W-1	Rear mounted (mounting behind wall) toilet
3331-T-1	3331-W-1	Front mounted toilet



Replace-Ware Model 3332 Series Replacement off-floor Siphon Jet toilet

ADA configuration available (must specify)



14 gage 304 stainless steel off-floor Siphon Jet toilet with wall waste outlet

Image shown: 3333-W-1-CN

MODEL VARIATIONS

Top Supply	Wall Supply	
3332-T-1	3332-W-1	Rear mounted (mounting behind wall) toilet
3333-T-1	3333-W-1	Front mounted toilet



Replace-Ware Model 3334 Series Replacement on-floor Blowout Jet toilet with wall waste outlet

ADA configuration available (must specify)



14 gage 304 stainless steel on-floor Blowout Jet toilet with wall waste outlet

Image shown: 3335-W-2

MODEL VARIATIONS

Top Supply	Wall Supply	
3334-T-1	3334-W-1	Rear mounted (mounting behind wall) toilet
3335-T-1	3335-W-1	Front mounted toilet



Replace-Ware Model 3336 Series Replacement on-floor Siphon Jet toilet with floor waste outlet

ADA configuration available (must specify)



14 gage 304 stainless steel on-floor Siphon Jet toilet with floor waste outlet

Image shown: 3337-W-3-CN

MODEL VARIATIONS

Top Supply	Wall Supply	
3336-T-1	3336-W-1	Rear mounted (mounting behind wall) toilet
3337-T-1	3337-W-1	Front mounted toilet



All products in this category are recyclable and manufactured with reclaimed materials



1700-T-1-FV

Penal-Ware® Model 1700 Series **Off-floor Blowout Jet urinal for rear mounted chase application**

Off-floor, rear wall mounted, 14" wide, 14 gage 304 stainless steel urinal with back wall washdown, wall waste outlet, enclosed p-trap and mounting hardware

Larger image shown: 1700-W-1

MODEL VARIATIONS

1700-T-1	Top Supply urinal
1700-W-1	Wall Supply urinal



1702-T-1-FV

Penal-Ware® Model 1702 Series **Off-floor Washout urinal for rear mounted chase application**

Off-floor, rear wall mounted, 14" wide, 14 gage 304 stainless steel urinal with back wall washdown, wall waste outlet, enclosed p-trap and mounting hardware

Larger image shown: 1702-W-1

MODEL VARIATIONS

1702-T-1	Top Supply urinal
1702-W-1	Wall Supply urinal



1705-T-1-FV

Penal-Ware® Model 1705 Series **ADA compliant off-floor, straddle style Blowout Jet urinals** **for rear mounted chase application**



Off-floor, rear wall mounted, 12" wide, 14 gage 304 stainless steel urinal with back wall washdown, wall waste outlet, enclosed p-trap and mounting hardware

Larger image shown: 1705-W-1

MODEL VARIATIONS

1705-T-1	Top Supply urinal
1705-W-1	Wall Supply urinal



1707-T-1-FV

Penal-Ware® Model 1707 Series **ADA compliant off-floor, straddle style Washout urinals** **for rear mounted chase application**



Off-floor, rear wall mounted, 12" wide, 14 gage 304 stainless steel urinal with back wall washdown, wall waste outlet, enclosed p-trap and mounting hardware

Larger image shown: 1707-W-1

MODEL VARIATIONS

1707-T-1	Top Supply urinal
1707-W-1	Wall Supply urinal

URINALS

Please visit www.acorneng.com for most current specifications.



Penal-Ware® Model 1709HEU Series

ADA compliant High Efficiency Urinal for rear mounted chase application



Off-floor, rear wall mounted 18 gage type 304 stainless steel urinal with 16 gage contour bowl will accommodate 1/8 gpf to 1/2 gpf flush valve for low consumption and includes 3/4" inlet connection and 1-1/2" plain end P-trap.

MODEL VARIATIONS

1709HEU-T-1	Top Supply urinal
1709HEU-W-1	Wall Supply urinal



Penal-Ware® Model 1710 Series

Multi-station Washout Urinals for rear mounted chase application

Off-floor, rear wall mounted, 14 gage 304 stainless steel urinal with back wall washdown, wall waste outlet, enclosed p-trap and mounting hardware

Image shown: 1714-W-1

MODEL VARIATIONS

1713-T-1	1713-W-1	3-foot trough
1714-T-1	1714-W-1	4-foot trough
1715-T-1	1715-W-1	5-foot trough
1716-T-1	1716-W-1	6-foot trough
1718-T-1	1718-W-1	8-foot trough



Penal-Ware® Model 1720 Series

Stall type Washout Urinal



On-floor, rear wall mounted 14 gage 304 stainless steel urinal with back wall washdown, floor waste outlet, 2" inside caulk waste and mounting hardware

Image shown: 1720-W-3

MODEL VARIATIONS

1720-T-3	Top Supply toilet
1720-W-3	Wall Supply toilet



Penal-Ware® Model 1724

Off-floor urinal screen for rear mounted chase application

18" deep x 36" high x 5" wide 14 gage 304 stainless steel urinal screen with mounting hardware

Image shown: 1724-1 w/urinals



Please visit www.acorneng.com for most current specifications.

URINALS



Dura-Ware® Model 2158 Series ADA compliant High Efficiency Urinal



Off-floor, front wall mounted 18 gage type 304 stainless steel urinal with 16 gage contour bowl will accommodate 1/8 gpf to 1/2 gpf flush valve for low consumption and includes 3/4" inlet connection and 1-1/2" plain end P-trap.

Image shown: 2158-T-1-FVL

MODEL VARIATIONS

2158-T-1	Top Supply urinal
2158-T-1	Wall Supply urinal



Dura-Ware® Model 2159 ADA compliant waterless urinal



Off-floor, front wall mounted 18 gage type 304 stainless steel urinal with 16 gage contour bowl, removable strainer acting as a retainer for the drain duck billed diaphragm and a 1-1/2" elbow waste.

Image shown: 2159-1



2160-W-1-FV-2898

Dura-Ware® Model 2160 Series Off-floor Blowout Jet urinal

Off-floor, front wall mounted, 14" wide, 16 gage 304 stainless steel Blowout Jet urinal with back wall wash down, wall waste outlet, fully enclosed 2-1/2" p-trap and o-ring seal waste adapter x 2" NCT

Larger image shown: 2160-T-1-FV

MODEL VARIATIONS

2160-T-1	Top Supply urinal
2160-W-1	Wall Supply urinal



2162-W-1-FV-2898

Dura-Ware® Model 2162 Series Off-floor Washout Jet urinal

Off-floor, front wall mounted, 14" wide, 16 gage 304 stainless steel Washout urinal with back wall wash down, wall waste outlet, fully enclosed 2-1/2" p-trap and o-ring seal waste adapter x 2" NCT

Larger image shown: 2162-T-1-FV

MODEL VARIATIONS

2162-T-1	Top Supply urinal
2162-W-1	Wall Supply urinal



2165-W-1-FVH-2898

Dura-Ware® Model 2165 Series ADA compliant off-floor Blowout Jet straddle urinal



ADA compliant, off-floor, front wall mounted, 12" wide, 16 gage 304 stainless steel Blowout Jet urinal with back wall wash down, wall waste outlet, fully enclosed 2-1/2" p-trap and o-ring seal waste adapter x 2" NCT

Image shown: 2165-T-1-FVL

MODEL VARIATIONS

2165-T-1	Top Supply toilet
2165-W-1	Wall Supply toilet

URINALS

Please visit www.acorneng.com for most current specifications.



2167-W-1-FVH-2898

Dura-Ware® Model 2167 Series **ADA compliant off-floor Washout straddle urinal**



ADA compliant, off-floor, front wall mounted, 12" wide, 16 gage 304 stainless steel Washout urinal with back wall wash down, wall waste outlet, fully enclosed 2-1/2" p-trap and o-ring seal waste adapter x 2" NCT

Larger image shown: 2167-T-1-FVL

MODEL VARIATIONS

2167-T-1	Top Supply toilet
2167-W-1	Wall Supply toilet



2174-W-1-FV-2898

Dura-Ware® Model 2173 Series **Multi-station Washout urinals**

Off-floor, front wall mounted, 14 gage 304 stainless steel urinal with back wall washdown, wall waste outlet, enclosed p-trap and mounting hardware

Larger image shown: 2174-T-1-FV

MODEL VARIATIONS

Top Supply Wall Supply

2173-T-1	2173-W-1	3-foot trough
2174-T-1	2174-W-1	4-foot trough
2175-T-1	2175-W-1	5-foot trough
2176-T-1	2176-W-1	6-foot trough
2178-T-1	2178-W-1	8-foot trough



2180-W-3-FV
W/2898 PANEL

Dura-Ware® Model 2180 Series **ADA compliant, stall type Washout urinal**



On-floor, floor outlet 16 gage 304 stainless steel Washout urinal, 18" wide with back wall washdown, and 2" inside caulk waste connection

Image shown: 2180-T-3-FVL

MODEL VARIATIONS

2180-T-3	Top Supply toilet
2180-W-3	Wall Supply toilet



Replace-Ware Model 3349 **ADA compliant, straddle type Blowout Jet urinal for replacement**



Off-floor, wall outlet 16 gage 304 stainless steel Blowout Jet urinal, 13" wide, with back wall wash down, fully enclosed 2-1/2" p-trap with gasketed waste outlet; configured as wall supply urinal (with a rear spud for a concealed, in-wall flush valve)

Image shown: 3349-W-1



Please visit www.acorneng.com for most current specifications.

LAVATORIES



All products in this category are recyclable and manufactured with reclaimed materials



Penal-Ware® Model 1650 20-inch lavy

14 gage, 304 stainless steel rectangular lavy (optional -LOB lavatory oval bowl also available)

Larger image shown: 1650-1-BP-04-LOB



1650FA-1-BP-04

MODEL VARIATIONS

Model	Description
1650-1	Rear mount lavy (20" wide x 12-1/2") with integral rectangular bowl (standard)
1650FA-1	Front access/mount lavy (20" wide x 12-1/2") with integral rectangular bowl



Penal-Ware® Model 1652 ADA compliant 18-inch lavy



14 gage, 304 stainless steel rectangular lavy.

Larger image shown: 1652-1-BP-04



1652-FA-1-BP-04-M-DMB



1652LRB-ADA-1-DMS-04

MODEL VARIATIONS

Model	Description
1652-1	Rear mount lavy (18" wide x 18") with integral oval bowl
1652LRB-1	Rear mount lavy (18" wide x 18") with integral rectangular bowl
1652FA-1	Front access/mount lavy (18" wide x 20") with integral oval bowl
1650FALRB-1	Front access/mount lavy (18" wide x 20") with integral rectangular bowl

LAVATORIES

Please visit www.acorneng.com for most current specifications.



1655FA-1-BP-04

Penal-Ware® Model 1655 **18-inch rectangular lavatory with oval bowl**

18" Wide x 12-1/2" 14 gage 304 stainless steel lavy with integral oval bowl

Larger image shown: 1655-1-BP-04

MODEL VARIATIONS

Model	Description
1655-1	Rear mount lavatory
1655FA-1	Front access/mount lavatory



1652FA-1-BP-04

Penal-Ware® Model 1656 **18-inch rectangular lavatory with multi-sided bowl**

18" wide x 11" 14 gage 304 stainless steel lavy with integral multi-sided bowl

Larger image shown: 1656-1-BP-4

MODEL VARIATIONS

Model	Description
1656-1	Rear mount lavatory
1656FA-1	Front access/mount lavatory



Penal-Ware® Model 1657 **18-inch multi-sided lavatory with oval bowl for rear mount chase application**

18" wide x 12-1/2" 14 gage 304 stainless steel multi-sided lavy with integral oval bowl

Image shown: 1657-1-BP-04



Penal-Ware® Model 1658 **18-inch Café-Lav with oval bowl for rear mounted chase application**

18" wide x 15" 14 gage 304 stainless steel lavatory with integral oval bowl and a hot water tank

Image shown: 1658-1-DMS-03



Penal-Ware® Model 1659 **15-inch compact lavatory for rear mount chase application**

15" wide x 11" 14 gage 304 stainless steel lavatory with integral multi-sided bowl

Image shown: 1659-1-BP-04



Penal-Ware® Model 1660

13-inch corner lavatory for rear mount chase application

13" x 13" 14 gage 304 stainless steel corner lavatory with multi-sided bowl

Image shown: 1661-1-BP-04

MODEL VARIATIONS

Model	Description
1660-1	Left chase
1661-1	Right chase



Penal-Ware® Model 1665

15-inch economy lavatory for rear mount chase application

15" wide x 10" 16 gage 304 stainless steel lavatory with integral multi-sided bowl

Image shown: 1665-1-BPH-04



Dura-Ware® Model Series 1900

Self-rimming classroom sink

16 gage 304 stainless steel rectangular self-rimming sink

Image shown: 1900-CPF2-DMBCPF

MODEL VARIATIONS

Model	Description
1900	15" wide x 25" long sink with 14" x 12" x 6" deep integral bowl
1901	17" wide x 25" long sink with 14" x 16" x 6" deep integral bowl



Dura-Ware® Model 1950/1951

Rectangular lavatory

16 gage 304 stainless steel front mounted rectangular lavatory with 3-inch integral backsplash

Large image shown: 1950-1-CSG-GT-TPT

MODEL VARIATIONS

Model	Description
1950-1	18" wide x 15" deep lavatory with 14-1/2" x 9-1/2" x 6" deep integral bowl
1950LC-1	20" wide x 15" deep lavatory for carrier mounting with 14-1/2" x 9-1/2" x 6" deep integral bowl
1951-1	18" wide x 18" deep lavatory with 14" x 12" x 6" deep integral bowl
1951LC-1	20" wide x 18" deep lavatory for carrier mounting with 14" x 12" x 6" deep integral bowl



1951-1-DMS-04



1951LC-1-DMS-04

LAVATORIES

Please visit www.acorneng.com for most current specifications.



1953LC-ADA-1-DMS-04

Dura-Ware® Model 1953 **Rectangular lavatory – ADA compliant**

16 gage 304 stainless steel front mounted rectangular lavatory with 3" integral backsplash, off-floor, wall waste configuration

Large image shown: 1953-1-DMS-04-GT-TPT



MODEL VARIATIONS

Model	Description
1953-1	18" wide x 22" deep lavatory with 14" x 12" x 5" deep integral bowl
1953LC-1	20" wide x 22" deep lavatory for carrier mounting with 14" x 12" x 5" deep integral bowl



Dura-Ware® Model 1955 **Economy trapezoidal lavatory**

18 gage 304 stainless steel front mounted 19-3/4" wide x 15-3/4" deep trapezoidal lavatory with a 16"x 12" x 5" integral bowl

Image shown: 1955-1-CSG-GT-TPT



Replace-Ware Model Series 3325 **Replacement 15" compact lavatory**

14 gage 304 stainless steel replacement lavy 15" wide x 11" deep with integral multi-sided bowl, 1-1/4" elbow waste with NPT female fitting and intended for use with existing hardware, waste and valves.

Image shown: 3325-1-BP-04



Replace-Ware Model Series 3326 **Replacement 18" multi-sided compact lavatory with oval bowl**

14 gage 304 stainless steel replacement. Lavy 18" wide x 12-1/2" deep with integral multi-sided bowl, 1-1/4" elbow waste with NPT female fitting and intended for use with existing hardware, waste and valves

Image shown: 3326-1-BP-04



Please visit www.acorneng.com for most current specifications.

SERVICE SINKS



All products in this category are recyclable and manufactured with reclaimed materials



1636

Penal-Ware® Model 1630 Stainless steel mop sinks

16 gage 304 stainless steel mop sink with 8" deep intergral bowl, inside caulk drain for connection to 3" pipe, removeable flat grid strainer

Larger image shown: 1630

MODEL VARIATIONS

Model	Description
1630	Square sink (24" x 24" x 10" deep)
1636	Rectangular sink (36" x 24" x 10" deep)



Penal-Ware® Model 1640 Service sink

14 gage, 304 stainless steel service sink; Configurations include a Off-Floor, Wall Outlet (-1), On-Floor, Wall Outlet (-2)

Larger image shown: 1640-1-SE-4

MODEL VARIATIONS

Model	Description
1640	Rear mount sink, 21" x 19" dimension
1642	Rear mount sink, 24" x 19" dimension
1640FA	Front access/mount sink, 21" x 21" dimension
1642FA	Front access/mount sink, 24" x 21" dimension



Terrazzo-Ware® Model TSH Series **Mop sink – standard height (12”)**

Precast Terrazzo composed of marble chips and Portland cement, ground smooth and sealed; standard height 12” shoulders; coved corners and floor is pitched toward the drain; integral drain with removable, stainless steel grid strainer; inside caulked connection to 3” pipe; galvanized steel tiling flanges may be specified; option –SSC provides stainless steel caps on the shoulders.

Image shown: TSH-24-TFI

MODEL VARIATIONS

TSH-24	24” x 24” x 12” height
TSH-32	32” x 32” x 12” height
TSH-36	36” x 36” x 12” height
TSH-3624	36” x 24” x 12” height



Terrazzo-Ware® Model TRH Series **Mop sink – reduced height**

Precast Terrazzo composed of marble chips and Portland cement, ground smooth and sealed; shoulders on these models are reduced to heights of 10” or 6”; coved corners and floor is pitched toward the drain; integral drain with removable, stainless steel grid strainer; inside caulked connection to 3” pipe; galvanized steel tiling flanges may be specified

Image shown: TRH-242410

MODEL VARIATIONS

TRH-242410	24” x 24” x 10” height
TRH-362410	36” x 24” x 10” height
TRH-242406	24” x 24” x 6” height
TRH-303006	30” x 30” x 6” height
TRH-323206	32” x 32” x 6” height
TRH-363606	36” x 36” x 6” height
TRH-363606-NC	36” x 36” x 6” height Neo-Corner
TRH-362406	36” x 24” x 6” height
TRH-363206	36” x 32” x 6” height



SERVICE SINKS



Terrazzo-Ware® Model TDF Series **Mop sink – drop front**

Precast Terrazzo composed of marble chips and Portland cement, ground smooth and sealed; shoulders are 12" high but shoulder is reduced to a height of 6"; coved corners and floor is pitched toward the drain; integral drain with removable, stainless steel grid strainer; inside caulked connection to 3" pipe; galvanized steel tiling flanges may be specified; option –SSC provides stainless steel caps on the shoulders.

Image shown: TDF-24

MODEL VARIATIONS

TDF-24	24" x 24" x 12" height with dropped front
TDF-32	32" x 32" x 12" height with dropped front
TDF-36	36" x 36" x 12" height with dropped front
TDF-3624	36" x 24" x 12" height with dropped front



TCR-28

Terrazzo-Ware® Model Corner Series **Mop sink – corners**

Precast Terrazzo composed of marble chips and Portland cement, ground smooth and sealed; shoulders are 12" high but the front shoulder is reduced to a height of 6"; coved corners and floor is pitched toward the drain; integral drain with removable, stainless steel grid strainer; inside caulked connection to 3" pipe; galvanized steel tiling flanges may be specified; Neo-Corner (pentagonal/square with one-corner mitered 45°) models can be ordered with all sides being standard 12" height; option –SSC provides stainless steel caps on the shoulders.

Large image shown: TNC-24-TF2

MODEL VARIATIONS

TCR-28	28" x 28" x 12" height with dropped front
TNC-24	24" x 24" x 12" height Neo-Corner with dropped front
TNC-32	32" x 32" x 12" height Neo-Corner with dropped front
TNC-36	36" x 36" x 12" height Neo-Corner with dropped front



Terrazzo-Ware® Model CSB **Clinic sink base**

Used to raise clinical service sinks for better access. Precast Terrazzo composed of marble chips and Portland cement, ground smooth and sealed; 10" x 5" slot to accommodate drain of sink

Image shown: CSB



All products on this page are recyclable and manufactured with reclaimed materials



3403-ES-1-H

Wash-Ware® Model 3401 Series Stainless steel elliptical washfountain



14 gage 304 stainless steel elliptical 5" deep bowl with integral backsplash and mounted sprayhead(s), T&P mixing valve assembly, standard vinyl clad black housing, wall waste outlet and means of activation (standard hand operation, 15 second metering button, sensor or foot operation); optional -ES style 16 gage stainless steel pedestal also available. Specify housing; off-floor (-1) and on-floor (-2) models

Larger image shown: 3402-2-F

MODEL VARIATIONS

3401	One station (27-3/4" wide)
3402	Two station (27-3/4" wide)
3403	Three station (48" wide)



3423-2-H

Wash-Ware® Model 3422 Series Stainless steel semi-circular washfountain

14 gage 304 stainless steel semi-circular 5" deep, 30" wide bowl with integral backsplash and mounted sprayhead, T&P mixing valve assembly, standard vinyl clad black housing, wall waste outlet and means of activation (standard hand operation, 15 second metering button, or sensor); optional -ES style 16 gage stainless steel pedestal also available. Specify housing; off-floor (-1) and on-floor (-2) models

Larger image shown: 3423-1-H-ES

MODEL VARIATIONS

3422	Two station
3423	Three station



3424ADA-2-H-ES

Wash-Ware® Model 3423ADA Series ADA compliant stainless steel semi-circular washfountain



14 gage 304 stainless steel semi-circular washfountain 5" deep, 38" wide bowl with integral backsplash and mounted sprayhead, T&P mixing valve assembly, standard vinyl clad black housing, wall waste outlet and means of activation (standard hand operation, 15 second metering button, or sensor); optional -ES style 16 gage stainless steel pedestal also available. Specify housing; off-floor (-1) and on-floor (-2) models

Larger image shown: 3424ADA-1-H-ES

MODEL VARIATIONS

3423ADA	Three station
3424ADA	Four station



Wash-Ware® Model 3442 **Stainless steel two station corner washfountain**

14 gage 304 stainless steel 5" deep, 37" wide corner two-station washfountain with integral backsplash and mounted sprayhead, T&P mixing valve assembly, standard vinyl clad black housing, wall waste outlet and means of activation (standard hand operation, 15 second metering button, or sensor); stainless steel pedestal housing optional -ES style 16 gage also available; specify off-floor (-1) and on-floor (-2) models

Image shown: 3442-2-H



Wash-Ware® Model 3443ADA **ADA compliant stainless steel three station corner washfountain**



ADA compliant 14 gage 304 stainless steel 5" deep, 37" wide corner three station washfountain with integral backsplash and mounted sprayhead, T&P mixing valve assembly, standard vinyl clad black housing, wall waste outlet and means of activation (standard hand operation, 15 second metering button, or sensor); stainless steel pedestal housing optional -ES style 16 gage also available; specify off-floor (-1) and on-floor (-2) models

Image shown: 3443-ES-ADA-1-H



3506-DBS-H-BO

Wash-Ware® Model 3506 Series **Stainless steel circular washfountain**

14 gage 304 stainless steel circular on-floor unit with 5" deep bowl, spray head, on-floor tail piece waste connection, T&P mixing valve assembly, vinyl clad black housing, floor waste outlet and means of activation (standard hand operation, 15 second metering button, sensor or foot operation)

Larger image shown: 3506-H-BO

MODEL VARIATIONS

3506	Six station unit with 38-1/4" diameter bowl
3508	Eight station unit with 54" diameter bowl
3506DBS	Six station unit with 38-1/4" diameter 9" deep bowl
3508DBS	Eight station unit with 54" diameter 9" deep bowl



3516ADA-3-SO-BO

Wash-Ware® Model 3506ADA Series **ADA compliant stainless steel circular washfountain**



ADA complaint, 14 gage 304 stainless steel circular on-floor unit with 5" deep x 54" diameter bowl, spray head, on-floor tail piece waste connection, T&P mixing valve assembly, vinyl clad black housing, and means of activation (standard hand operation, 15 second metering button, or sensor)

Image shown: 3506ADA-3-H-BO

MODEL VARIATIONS

3506ADA	Six station unit (54" Dia. Bowl)
3508ADA	Eight station unit (54" Diam. Bowl)
3516ADA	Six station unit (38-1/4" Diam. Bowl with Angular ADA Base)



3543DBS-2-H

Wash-Ware® Model 3543 Series **Stainless steel semi-circular on-floor washfountain**

14 gage 304 stainless steel semi-circular on-floor unit with 38" wide bowl, spray head, on-floor tail piece waste connection, T&P mixing valve assembly, vinyl clad black housing, and means of activation (standard hand operation, 15 second metering button, sensor or foot operation)

Larger image shown: 3543-2-H

MODEL VARIATIONS

3543	Three station unit with standard 5" bowl
3544	Four station unit with standard 5" bowl
3543DBS	Three station unit with 9" deep bowl
3544DBS	Four station unit with 9" deep bowl



3562DBS-2-F-BO

Wash-Ware® Model 3562 Series **Stainless steel corner on-floor washfountain**

14 gage 304 stainless steel corner on-floor unit with 37" wide bowl, spray head, on-floor tail piece waste connection, T&P mixing valve assembly, vinyl clad black housing, and means of activation (standard hand operation, 15 second metering button, sensor or foot operation)

Larger image shown: 3562-2-F-BO

MODEL VARIATIONS

3562	Two station unit with standard 5" bowl
3563	Three station unit with standard 5" bowl
3562DBS	Two station unit with 9" deep bowl
3563DBS	Three station unit with 9" deep bowl



Wash-Ware® Model 3600 Series **ADA compliant Terrazzo washfountain**



ADA compliant Terrazzo washfountain with integral spray head, T&P mixing valve assembly, configured for wall waste and means of activation (standard hand operation, 15 second metering button, or sensor)

Image shown: 3603-2-H

MODEL VARIATIONS

3601	One station, off-floor unit with 20-3/8" wide bowl and stainless steel bottom housing
3603	Three station, on-floor unit with 36" wide bowl Terrazzo pedestal with stainless steel access panel
3604	Four station, on-floor unit with 46" wide bowl Terrazzo pedestal with stainless steel access panel



GROUP WASH



Wash-Ware® Model 3610 Series Terrazzo corner washfountain

Three station unit is ADA compliant when mounted in proper ADA configuration



On-floor Terrazzo washfountain with integral spray head, T&P mixing valve assembly, Terrazzo pedestal with stainless steel access panel, configured for wall waste outlet, and means of activation (standard hand operation, 15 second metering button, or sensor)

Image shown: 3613-2-SO

MODEL VARIATIONS

3612	Two station unit with 26-3/4" wide corner Terrazzo bowl
3613	ADA Three station unit with 37" wide corner Terrazzo bowl



Wash-Ware® Model 3622 Corterra corner washfountain

Corterra two station corner washfountain with 26-3/4" wide Corterra bowl with blacksplash, integral spray head, T&P mixing valve assembly, Corterra pedestal with stainless steel access panel, configured for wall waste and means of activation (standard hand operation, 15 second metering button, or sensor); off-floor (-1) and on-floor (-2) options are available.

Image shown: 3622-2-H



Wash-Ware® ADA Corterra Series ADA Corterra washfountain



ADA compliant Corterra washfountain Corterra bowl with blacksplash, integral spray head, T&P mixing valve assembly, Corterra pedestal with stainless steel access panel, configured for wall waste and means of activation (standard hand operation, 15 second metering button, or sensor); off-floor (-1) and on-floor (-2) options are available.

Image shown: 3633-2-SO-PDM

MODEL VARIATIONS

3633	Three station (36" wide Corterra bowl)
3644	Four station (46" wide Corterra bowl)



Replace-Ware for Wash-Ware® (washfountains) Washfountain retro-paks

Replacement spray head, Air-Control valve and T&P mixing valve

Image shown: 3351-H

Model 3350

Retrofit assembly made of 304 stainless steel also includes stanchion, upper and lower support castings, tie rods, gasket accommodates Bradley foot-operated FC models (AFC, BFC, HFC, OFC, CFC, CFC-B, CFC-H, CFC-O, KFC, KFC-B, KFC-H, KFC-O) or alternatively 2 or 3 station corner unit, 2, 3 or 4 station semi-circular unit, 6 or 8 station circular unit; indicate -H (hand operation), -SO (sensor operated) or -SO-BAT (Battery powered sensor operated)

Model 3351

Retrofit assembly made of 304 stainless steel also includes stanchion, upper and lower support castings, tie rods, gasket accommodates Bradley hand-operated models (CHC 554, CHC 536, KHC 5541) or alternatively 2 or 3 station corner unit, 2, 3 or 4 station semi-circular unit; indicate -H (hand operation), -SO (sensor operated) or -SO-BAT (Battery powered sensor operated)



Meridian Model 3700 Series Curved front stainless steel washbasin



16 gage 304 stainless steel curved front washbasin, round drop-in lavy bowl, spout and means of activation (pushbutton or sensor), T&P mixing valve assembly, p-trap waste assembly and waste enclosure. Additional choices include on-floor (-1), on-floor (-2), optional integral bowl (-IB)

Image shown: 3702-1-H

MODEL VARIATIONS

3701	One station (19" width)
3702	Two station (49" width)
3703	Three station (79" width)
3704	Four station (109" width)



Meridian Model 3710 Series Straight front stainless steel washbasin



16 gage 304 stainless steel straight front washbasin, round integral lavy bowl, spout and means of activation (pushbutton or sensor), T&P mixing valve assembly, p-trap waste assembly and waste enclosure. Additional choices include on-floor (-1), on-floor (-2)

Image shown: 3712-1-H

MODEL VARIATIONS

3711	One station (24" width)
3712	Two station (48" width)
3713	Three station (72" width)
3714	Four station (96" width)



Meridian Model 3750 Series HiLo Corterra washbasin



Corterra solid surface washbasin 22" deep with deck mounted spout operation, T/P Mixing valve (ASSE 1070), integral Corterra basin, combined tubular waste with single p-trap and stainless steel enclosures. Series is available as off-floor units only.

Larger image shown: 3752-1-HLR-SO



3753-1-LHL-SO

MODEL VARIATIONS

3751	One station (30" width)
3752	Two station (60" width)
3753	Three station (90" width)



Meridian Model 3760 Series Corterra straight front Counter-Lavs

Corterra solid surface Counter-Lav 22" deep with integral Corterra lavy bowl, front bull nose edge, 3" front apron and 4" backsplash shipped loose for in field installation.

Image shown: 3762-LSS-SM-09

MODEL VARIATIONS

3761	One station (30" width)
3762	Two station (60" width)
3763	Three station (90" width)
3764	Four station (120" width)



Meridian Model 3770 Series Corterra curved front Counter-Lavs



Corterra solid surface washbasin 21-1/2" deep with integral Corterra spout and round bowl design, T&P mixing valve assembly, p-trap waste assembly, and stainless steel framed vinyl clad galvanized steel waste enclosure; off-floor (-1) and on-floor (-2) options are available.

Image shown: 3772-1-SO-SES

MODEL VARIATIONS

3771	One station (20" width)
3772	Two station (50" width)
3773	Three station (80" width)



Meridian Model 3790 Series Corterra Kurve



Corterra solid surface washbasin 20-3/4" deep with integral Corterra bowl and upper spray head assembly made of stainless steel and Corterra lid, T&P mixing valve assembly, p-trap waste assembly, and stainless steel waste enclosure. -1 off floor, wall outlet, -2 on-floor, wall outlet

Larger image shown: 3792-1-H-DV



3791RO-1-SO-DV

MODEL VARIATIONS

3791	One station (24" width)
3792	Two station (55" width)
3793	Three station (84" width)

DRINKING FOUNTAINS

Please visit www.acorneng.com for most current specifications.



All products in this section are recyclable and manufactured with reclaimed materials



All products in this section meet with lead free requirements where the wetted surface of this product contacted by water contains less than 0.25% lead.



1670FA-1-BP-03

Penal-Ware® Model 1670 Series Drinking fountain

18" wide x 12" deep 14 gage 304 stainless steel drinking fountain with a shallow integral oval bowl and 4" back splash

Larger image shown: 1670-1-BC-03

MODEL VARIATIONS

1670	Rear mount unit with sloped bottom
1670FA	Front mount unit with removable bottom access panel



1672FA-1-BC-03

Penal-Ware® Model 1672 Series ADA compliant drinking fountain



15" wide x 18" deep 14 gage 304 stainless steel drinking fountain with a shallow integral multi-sided bowl and 4" back splash

Image shown: 1672-1-BC-03

MODEL VARIATIONS

1672	Rear mount unit
1672FA	Front mount unit with removable access cover



Penal-Ware® Model 1674 Drinking bubbler assembly

8"x4" 14 gage 304 Stainless Steel Panel for Drinking Bubbler Assembly; optional components necessary for fully operational unit

Image shown: 1674-1-BP-03



Dura-Ware® Model 2010 18-inch drinking fountain

16 gage 304 stainless steel drinking fountain 18" wide x 12" deep with 4" integral back splash and removable bottom access panel

Image shown: 2010-1-BC-03



Dura-Ware® Model 2012 ADA compliant 15-inch drinking fountain



16 gage 304 stainless steel drinking fountain 15" wide x 18" deep with 4" integral back splash and removable bottom access panel

Image shown: 2012-1-BC-03



Please visit www.acorneng.com for most current specifications.

DRINKING FOUNTAINS



Dura-Ware® Model 2020 & 2030 ADA compliant 2 & 3 station drinking fountain



16 gage 304 Stainless Steel Multi-Station ADA compliant Drinking Fountain, with 2" integral backsplash and removable bottom access panel

Image shown: 2030-1-BC-03

MODEL VARIATIONS

2020	30" wide x 17" deep
2030	50" wide x 18-1/4" deep

Want More Drinking Fountain Products?



Lead Free



Many are
ADA Compliant

Through its Water Coolers and Drinking Fountains division, Acorn offers a complete line of indoor and outdoor drinking fountains that allow the designer a variety of choices for finishes, colors and styles, complemented by a complete line of water coolers for schools, office buildings and institutions.

Acorn and its sister company Murdock Manufacturing provide a choice for quality, backed by over 200 years of combined experience in the plumbing industry.

www.acorndrinkingfountains.com
www.murdockmfg.com



Murdock only

SHOWERS

Please visit www.acorneng.com for most current specifications.



All products in this section are recyclable and manufactured with reclaimed materials



These thermostatic valves will be available for Acorn Shower products.

See individual submittal



Thermostatic-based Temperature/Pressure compensating shower valve complaint to ASSE 1016-2011.



High capacity group showering tempering valve compliant to ASSE 1069 and 1070.

www.acorncontrolvalves.com

COMING IN 2014

exclusively from Acorn Controls™,
Acorn's new line of Thermostatic Mixing Valves:



Shower-Ware® Model 110 Acme Wall Shower

16 gage 304 stainless steel Acme shower with specified linear footage of housing per station, control valve and standard showerhead

Image shown: 110-W-RD (two stations on one run of housing pictured)

VALVE VARIATIONS *(note: 3rd digit indicates valve type)*

Available in Single Temperature or Hot & Cold valve selections, please refer to full submittal sheet.



Shower-Ware® Model 110BADA ADA Compliant Acme Wall Shower

16 gage 304 stainless steel ADA compliant Acme Shower includes standard upper Acme run housing per station, upper shower head, lower ADA drop housing with control valve, diverter valve, flex handheld with inline vacuum breaker, recessed soap dish, 2-wall grab bar, and folded padded seat

Image shown: 118ADA-L-W

VALVE VARIATIONS *(note: 3rd digit indicates valve type)*

Available in Single Temperature or Hot & Cold valve selections, please refer to full submittal sheet.



Shower-Ware® Model 130B Acme Back to Back Shower

16 gage 304 Stainless Steel Back to Back Acme Shower with specified linear footage of housing per station, control valve and standard showerhead.

Image shown: (4) 138-W-RD with (2) stations, (2) stations unseen on back side of unit

VALVE VARIATIONS *(note: 3rd digit indicates valve type)*

Available in Single Temperature or Hot & Cold valve selections, please refer to full submittal sheet.



Shower-Ware® Model 410B **Apex Flush-Mounted Showers**

18 gage 304 Stainless Steel Apex Flush Mount Shower with control valve, standard showerhead and galvanized mounting frame

Image shown: 418B-W-RD

VALVE VARIATIONS *(note: 3rd digit indicates valve type)*

Available in Single Temperature or Hot & Cold valve selections, please refer to full submittal sheet.



Shower-Ware® Model 410BADA **ADA Compliant Apex Flush-Mounted Showers**

18 gage 304 Stainless Steel Apex Flush Mount ADA Shower with control valve, 60" flex handheld shower with quick disconnect, in-line vacuum breaker, hi-lo brackets, surface mounted soap dish and mounting frame.

Image shown: 418BADA-W shown with 1108-3 grab bar

VALVE VARIATIONS *(note: 3rd digit indicates valve type)*

Available in Single Temperature or Hot & Cold valve selections, please refer to full submittal sheet.



Shower-Ware® Model 410BADAWH **ADA Compliant Apex Flush-Mounted Showers, Wide Housing**



18 gage 304 Stainless Steel Apex Flush Mount ADA Wide Housing Shower with control valve, standard upper shower head at 6'0", diverter, 60" flex handheld shower with quick disconnect, in-line vacuum breaker, recessed soap dish, 2-wall grab bar, padded folding seat, curtain w/head rail and mounting hardware.

Image shown: 418BADAWH-W shown with 1108-3 grab bar

VALVE VARIATIONS *(note: 3rd digit indicates valve type)*

Available in Single Temperature or Hot & Cold valve selections, please refer to full submittal sheet.



Shower-Ware® Model 410BBF **ADA Compliant Apex Flush-Mounted Showers, Barrier Free**

18 gage 304 Stainless Steel Apex Flush Mount Shower with control valve, standard upper shower head at 6'0", diverter, 60" flex handheld shower with quick disconnect, in-line vacuum breaker, recessed soap dish, 2-wall grab bar, padded folding seat and mounting frame

Image shown: 418BBF-W shown with 1108-3 grab bar

VALVE VARIATIONS *(note: 3rd digit indicates valve type)*

Available in Single Temperature or Hot & Cold valve selections, please refer to full submittal sheet.

SHOWERS

Please visit www.acorneng.com for most current specifications.



Shower-Ware® Model 420B **Apex Corner-Mounted Showers**

18 gage 304 Stainless Steel Apex Corner Mounted Shower with control valve, standard showerhead and mounting hardware

Image shown: 428B-W-RD

VALVE VARIATIONS *(note: 3rd digit indicates valve type)*

Available in Single Temperature or Hot & Cold valve selections, please refer to full submittal sheet.



Shower-Ware® Model 420BHC **Apex Corner-Mounted Handicapped Showers - Non ADA Compliant**

18 gage 304 Stainless Steel Apex Corner Mounted Shower with control valve, standard upper shower head at 6'0", diverter, 60" flex handheld shower, in-line vacuum breaker, recessed soap dish, 24" grab bar and mounting hardware

Image shown: 428BHC-W shown with 1108-1 grab bar (24")

VALVE VARIATIONS *(note: 3rd digit indicates valve type)*

Available in Single Temperature or Hot & Cold valve selections, please refer to full submittal sheet.



Shower-Ware® Model 450B **Apex Surface-Mounted Showers**

18 gage 304 Stainless Steel Apex Surface Mounted Shower with control valve, standard showerhead and mounting hardware

Image shown: 458B-W-RD

VALVE VARIATIONS *(note: 3rd digit indicates valve type)*

Available in Single Temperature or Hot & Cold valve selections, please refer to full submittal sheet.



Shower-Ware® Model 450BADA **ADA Compliant Apex Surface-Mounted Showers**



18 gage 304 Stainless Steel Apex Surface Mounted ADA Shower with control valve, 60" flex handheld shower with quick disconnect, in-line vacuum breaker, hi-lo brackets, surface mounted soap dish, sloping top and bottom and mounting hardware

Image shown: 458BADA-W shown with 1108-3 grab bar

VALVE VARIATIONS *(note: 3rd digit indicates valve type)*

Available in Single Temperature or Hot & Cold valve selections, please refer to full submittal sheet.



Shower-Ware® Model 450BADAWH **ADA Compliant Apex Surface-Mounted Showers, Wide Housing**



18 gage 304 Stainless Steel Apex Surface Mounted ADA Wide Housing Shower with control valve, standard upper showerhead at 6'0", diverter, 60" flex handheld shower, quick disconnect, in-line vacuum breaker, recessed soap dish, 2-wall grab bar, padded folding seat, curtain with headrail and mounting hardware

Image shown: 456BADAWH-LFS-W shown with 1108-3 grab bar

VALVE VARIATIONS *(note: 3rd digit indicates valve type)*

Available in Single Temperature or Hot & Cold valve selections, please refer to full submittal sheet.



Shower-Ware® Model 450BBF Apex Type 5, Surface-Mounted Barrier Free Showers



18 gage 304 Stainless Steel Apex Surface Mount Shower with control valve, standard upper shower head at 6'0", diverter, 60" flex handheld shower with quick disconnect, in-line vacuum breaker, 2-wall grab bar, padded folding seat and mounting frame.

Image shown: 458BBF-W-RH-D-LFS shown with 1108-3 grab bar

VALVE VARIATIONS *(note: 3rd digit indicates valve type)*

Available in Single Temperature or Hot & Cold valve selections, please refer to full submittal sheet.



468B-W-RD-WH

Shower-Ware® Model 460B Apex Two Station Showers

18 gage 304 Stainless Steel Apex 2-Station Shower with control valves, standard upper shower heads and mounting hardware

Image shown: 468B-W-RD

VALVE VARIATIONS *(note: 3rd digit indicates valve type)*

Available in Single Temperature or Hot & Cold valve selections, please refer to full submittal sheet.



Shower-Ware® Model 460BHC Apex Two Station Handicapped Showers

18 gage 304 Stainless Steel Apex 2-Station Shower with control valves, standard upper shower heads at 6'0", (1) Handicap station with diverter, 60" flex handheld, in-line vacuum breaker

Image shown: 468BHC-W-RH-RD shown with 1108-1 grab bar (24")

VALVE VARIATIONS *(note: 3rd digit indicates valve type)*

Available in Single Temperature or Hot & Cold valve selections, please refer to full submittal sheet.



478BWH-W-RD

Shower-Ware® Model 470B Apex Three-Station Showers

18 gage 304 Stainless Steel Apex 3-Station Shower with control valves, standard upper shower heads and mounting hardware

Image shown: 478B-W-RD

VALVE VARIATIONS *(note: 3rd digit indicates valve type)*

Available in Single Temperature or Hot & Cold valve selections, please refer to full submittal sheet.

SHOWERS

Please visit www.acorneng.com for most current specifications.



Shower-Ware® Model 470BHC Apex Three Station Handicapped Showers

18 gage 304 Stainless Steel Apex 3-Station Shower with control valves, standard upper shower heads at 6'0", (1) Handicap station with diverter, 60" flex handheld, in-line vacuum breaker, recessed soap dish (on HC station only), 24" grab bar and mounting hardware

Image shown: 478BHC-W-RH-RD shown with 1108-1 grab bar (24")

VALVE VARIATIONS *(note: 3rd digit indicates valve type)*

Available in Single Temperature or Hot & Cold valve selections, please refer to full submittal sheet.



Shower-Ware® Model 480B Eco-Rain Apex Surface-Mounted Showers

18 gage 304 Stainless Steel Eco-Rain Apex Surface Mounted Shower with wall supply, control valve with check stops, standard showerhead, recessed soap dish and mounting hardware

Image shown: 488B

MODELS



486B

Air Control, Single Temp



488B

Temperature / Pressure Balance



Shower-Ware® Model 480BADA ADA Compliant Eco-Rain Apex Surface-Mounted Showers



18 gage 304 Stainless Steel Eco-Rain Apex Surface Mounted Shower with wall supply, control valve with check stops, flex handheld shower, inline vacuum breaker, 24" slide bar (shipped loose), recessed soap dish and mounting hardware

Image shown: 488BADA

MODELS



486BADA

Air Control, Single Temp



488BADA

Temperature / Pressure Balance



Shower-Ware® Model 500 Series

Zenith built-in showers

Control valve, standard showerhead and mounting hardware

Image shown: 515

MODEL VARIATIONS *(*note: 3rd digit indicates valve type)*

510

Back Supply

530

Top or Bottom Supply (must specify)



Available in Single Temperature or Hot & Cold valve selection.
Please refer to full submittal sheet.



SHOWERS



Shower-Ware® Model 500ADA Series ADA compliant Zenith built-in shower



Control valve, standard upper showerhead, flex handheld shower, diverter, in line vacuum breaker, recessed soap dish, two-wall grab bar, folding seat and mounting hardware

Image shown: 538ADA

MODEL VARIATIONS *(*note: 3rd digit indicates valve type)*

530ADA Top/Bottom Supply

Available in Single Temperature or Hot & Cold valve selection.
Please refer to full submittal sheet



Shower-Ware® Model 521 Series Zenith Exposed Supply Showers

Heavy cast bronze chrome plated Zenith Exposed control valve, standard showerhead, risers and mounting hardware

Image shown: 521

MODEL VARIATIONS *(*note: 3rd digit indicates valve type)*

521	Shower with Flo-Cloz, Hot & Cold Valve
525	Shower with Flo-Cloz, Single Temperature Valve



Shower-Ware® Model 600 Series Classic column shower

14 gage stainless steel column with standard upper shower head(s), control valve and dome grate drain base; HC models: same specification as standard models but with one handicap station with diverter, 60-inch flex handheld shower, inline vacuum breaker, recessed soap dish at HC station only and 24-inch grab bar

Image shown: 645-B11-RD

MODEL VARIATIONS *(*note: 3rd digit indicates valve type)*

Standard	Handicap	
620	620HC	Two Station
630	630HC	Three Station
640	640HC	Four Station
650	650HC	Five Station
660	660HC	Six Station

VALVE VARIATION *(note 3rd digit indicates valve type)*

Available in Single Temperature or Hot & Cold valve selections, please refer to full submittal sheet

SHOWERS

Please visit www.acorneng.com for most current specifications.



Shower-Ware® Model 700 Series Capital column shower

16 gage 304 stainless steel column with standard upper showerhead(s), control valve, circular soap dish and drain base
HC models: same specification as standard models but with one handicap station with diverter, 60" flex handheld, inline vacuum breaker and 24" grab bar; HC models are designed for handicap use however are not ADA complaint

Large image shown: 748-HC-B11

MODEL VARIATIONS *(*note: 3rd digit indicates valve type)*

Standard	Handicap	
720	720HC	Two Station
730	730HC	Three Station
740	740HC	Four Station
750	750HC	Five Station
760	760HC	Six Station

VALVE VARIATION *(note 3rd digit indicates valve type)*

Available in Single Temperature or Hot & Cold valve selections, please refer to full submittal sheet



Shower-Ware® Model 900 Series Pylon shower

14 gage 304 stainless steel pylon shower; column with control valve, standard showerhead and anchor plate. Optional –FS foot spray is available.

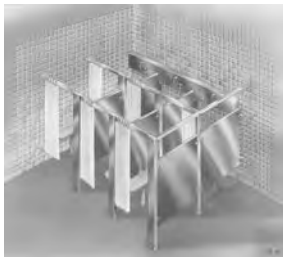
Image shown: 927-FS

MODEL VARIATIONS *(*note: 3rd digit indicates valve type)*

910	One Station
920	Two Station
930	Three Station
940	Four Station

VALVE VARIATION *(note 3rd digit indicates valve type)*

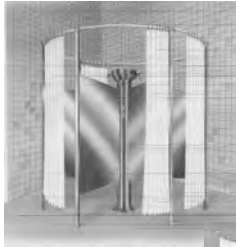
Available in Single Temperature or Hot & Cold valve selections, please refer to full submittal sheet



Shower-Ware® Model –MS Series Modular privacy shower compartments

Compartments are arranged to accommodate each shower station; Includes posts, head rails, brackets escutcheons, white Herculite curtains, stainless steel panels (cemented to structural honeycomb core) and dressing compartments. Submittal drawing particular to application is required

Image shown: 110-W-MS



Shower-Ware® Model –DS Series Circular privacy shower compartments

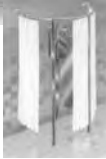
Wedge shaped compartments are arranged around a wall mounted shower or column shower; Includes posts, headrails, brackets escutcheons, white Herculite curtains, and stainless steel panels (cemented to structural honeycomb core).

Ideal for:

Apex Type 6 Two Stations Shower Models 460 or 460HC Series
Apex Type 7 Three Station Shower Models 470 or 460HC Series
Classic Column Shower Models 600 or 600HC Series
Capital Column Shower Models 700 or 700HC Series

Larger image shown: 700 series shower

with 470
Series shower



Penal-Ware® Model 1730 Series Cabinet shower

16 gage 304 stainless steel cabinet shower, factory installed shower head inside door jamb, surface mounted soap dish, towel hook on outside entry and mounting hardware. –KD option is available to order knock down cabinets.

Larger image shown: 1730-03-RD

MODEL VARIATIONS

1730	30" W x 30" D x 88"H cabinet with vent grille, plain end elbow waste for rear mounted, chase application
1732	32" W x 32" D x 88"H cabinet with vent grille, plain end elbow waste for rear mounted, chase application
1736	36" W x 36" D x 88"H cabinet with vent grille, plain end elbow waste for rear mounted, chase application
1730FA	30" W x 30" D x 88"H cabinet with 2" inside caulk waste for front access/floor mounted application
1732FA	32" W x 32" D x 88"H cabinet with 2" inside caulk waste for front access/floor mounted application
1736FA	36" W x 36" D x 88"H cabinet with 2" inside caulk waste for front access/floor mounted application



1730FA-03



Penal-Ware® Model 1736ADA-A ADA complaint cabinet shower



14 gage 304 stainless steel cabinet shower with flush mounted Penal-Pak style shower with upper head at 72" and flex handheld shower at 48", recessed soap dish, integral stainless steel seat, two-wall grab bar, towel hook on outside entry and 2" inside caulk drain.

Image shown: 1736ADA-A-03-M



1741-03-M-RD

Penal-Ware® Model 1741 Series Penal-Pak shower

14 gage 304 stainless steel Penal-Pak shower panel with penal shower head and mounting hardware

Image shown: 1741-04-M-RD

MODEL VARIATIONS

1741	Shower for rear mounted, chase application
1741FA	Shower for front access/mounted application

SHOWERS

Please visit www.acorneng.com for most current specifications.



ADA compliant Penal-Pak shower



14 gage 304 stainless steel ADA compliant Penal-Pak shower with upper shower head, 60" quick disconnect handheld shower, recessed soap dish and mounting hardware

Larger image shown: 1741ADA-03M

MODEL VARIATIONS

1741ADA	Shower for rear mounted, chase application
1741ADAF-A	Shower for front access/mounted application



Penal-Ware® Model 1743 Penal wall mounted shower

Chrome plated brass penal wall shower head on rear mounted anchor plate, 14 gage 304 stainless steel plate for valve and mounting hardware

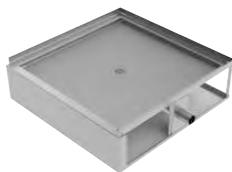
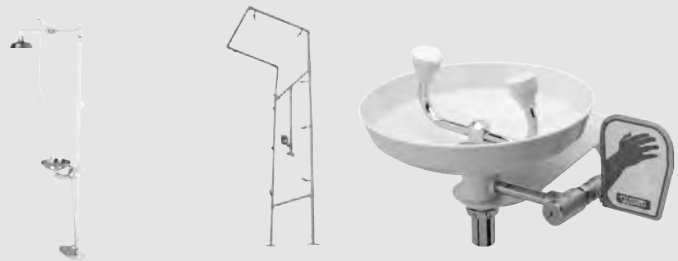
Image shown: 1743-03-M-RD



Emergency Drench Showers?

Check out Acorn Safety for Drench Showers, Eye Washes, Combination Units, and other Drench Equipment

www.acornsafety.com



Penal-Ware® Model 1749 Shower floor for built-in installation

14 gage 304 stainless steel shower floor with matte finish, slip resistant surface, 2-3/8" plain end elbow waste and 3-wall tiling flange

Image shown: 1749R



Corterra™ Model CSB Series Corterra™ Shower base

Shower base construction is Corterra™ cast polyester resin with integral tiling flanges. The 3" wide integral threshold base allows installation of a shower door and ADA shower bases have an open entry. The shower base has coved corners and floor is pitched to the drain outlet for positive drainage. Drain shall have a removable stainless steel strainer for caulked connection to a 2" pipe

Image shown: CSBS-36-3F

MODEL VARIATIONS

CSBS-36-3F	36" x 36" base
CSBS-42-3F	42" x 42" base
CSBR-4234-3F	42" x 34" base
CSBADA-36-3F	36" x 36" ADA base
CSBRADA-6030-3F	60" x 30" ADA base



Please visit www.acorneng.com for most current specifications.

SHOWERS



All products in this section are recyclable and manufactured with reclaimed materials



Terrazzo-Ware® Model SBR Series **Rectangular shower base with integral threshold**

Rectangular precast Terrazzo composed of marble chips and Portland cement, ground smooth and sealed; base floor is pitched toward the drain; 3" threshold provided for door; Three sides have galvanized tiling flanges extending 1-1/2" above 1-1/4" wide shoulder; integral drain with stainless steel strainer is provided for caulked connection to a 2" pipe

Image shown: SBR-4832-3F

MODEL VARIATIONS

SBR-3632-3F	36" x 32" base (long side entry)
SBR-4232-3F	42" x 32" base (long side entry)
SBR-4234-3F	42" x 34" base (long side entry)
SBR-4236-3F	42" x 36" base (long side entry)
SBR-4832-3F	48" x 32" base (long side entry)
SBR-4834-3F	48" x 34" base (long side entry)
SBR-4836-3F	48" x 36" base (long side entry)
SBR-5432-3F	54" x 32" base (long side entry)
SBR-6030-3F	60" x 30" base (long side entry)
SBR-6032-3F	60" x 32" base (long side entry)
SBR-6034-3F	60" x 34" base (long side entry)
SBR-6036-3F	60" x 36" base (long side entry)
SBR-3236-3F	32" x 36" base (short side entry)
SBR-3642-3F	36" x 42 base (short side entry)
SBR-3648-3F	36" x 48 base (short side entry)



Terrazzo-Ware® Model SBC Series **Corner shower base with integral threshold**

Neo-Corner (pentagonal/square with one-corner mitered 45°) precast terrazzo composed of marble chips and Portland cement, ground smooth and sealed; base floor is pitched toward the drain; Three sides have 3" threshold provided for door; Two sides have galvanized tiling flanges extending 1-1/2" above 1-1/4" wide shoulder; integral drain with stainless steel strainer is provided for caulked connection to a 2" pipe

Image shown: SBC-36-2F

MODEL VARIATIONS

SBC-32-2F	32" x 32" base
SBC-34-2F	34" x 34" base
SBC-36-2F	36" x 36" base
SBC-38-2F	38" x 38" base
SBC-40-2F	40" x 40" base



Terrazzo-Ware® Model SBS Series Square shower base with integral threshold



Square precast terrazzo composed of marble chips and Portland cement, ground smooth and sealed; base floor is pitched toward the drain; 3-inch threshold(s) provided for door; galvanized tiling flanges extend 1-1/2" above 1-1/4" wide shoulder; integral drain with stainless steel strainer is provided for caulked connection to a 2" pipe

Image shown: SBS-36-3F

MODEL VARIATIONS

SBS-30-3F	30" x 30" base (3 sides flanged)
SBS-32-3F	32" x 32" base (3 sides flanged)
SBS-34-3F	34" x 34" base (3 sides flanged)
SBS-36-3F	36" x 36" base (3 sides flanged)
SBS-40-3F	40" x 40" base (3 sides flanged)
SBS-42-3F	42" x 42" base (3 sides flanged)
SBS-48-3F	48" x 48" base (3 sides flanged)
SBS-32-2F	32" x 32" base (2 sides flanged)
SBS-36-2F	36" x 36" base (2 sides flanged)
SBS-40-2F	40" x 40" base (2 sides flanged)

Terrazzo-Ware® Model SBFF Series Shower base with fully flanged sides

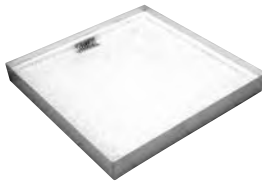


Precast terrazzo composed of marble chips and Portland cement, ground smooth and sealed; base floor is pitched toward the drain; galvanized tiling flanges extend 1-1/2" above 1-1/4" shoulder on all sides; 2-1/2" wide threshold; integral drain with stainless steel strainer is provided for caulked connection to a 2" pipe

Image shown: SBC-36-FF

MODEL VARIATIONS

SBS-32-FF	32" x 32" square base
SBS-36-FF	36" x 36" square base
SBS-40-FF	40" x 40" square base
SBC-36-FF	36" x 36" Neo-Corner base
SBC-40-FF	40" x 40" Neo-Corner base
SBR-4832-FF	48"x32" rectangular base



Terrazzo-Ware® Model SBBOD Series **Square Shower base with back outlet drain**

Square precast terrazzo composed of marble chips and Portland cement, ground smooth and sealed; base floor is pitched toward the drain; galvanized tiling flanges extend 1" above 1-1/2" wide shoulder; back outlet drain with stainless steel strainer is provided for a female NPT connection to a 2" pipe

Image: SBS-36-BOD-FF

MODEL VARIATIONS

SBBOD-32-3F	32" x 32" square base (3 sides flanged), 3" wide threshold
SBBOD-36-3F	36" x 36" square base (3 sides flanged), 3" wide threshold
SBBOD-36-FF	36" x 36" square base (fully flanged), 2-1/2" wide threshold



Terrazzo-Ware® Model SBI Series **Institutional Shower Base**

Precast terrazzo composed of marble chips and Portland cement, ground smooth and sealed; base floor is pitched toward the drain; 6" high shoulder 3" thresholds; integral drain with stainless steel strainer is provided for caulked connection to a 2" pipe

Image: SBC-36-FF

MODEL VARIATIONS

SBIC-36	36" x 36" Neo-Corner
SBIS-36	36" x 36" square base
SBIS-36-BOD	36" x 36" square base with back outlet drain
SBIR-7236	72" x 36" rectangular base
SBIR-7236-DD	72" x 36" rectangular base with dual sections each with drain



Terrazzo-Ware® Model SBADA Series **ADA compliant shower base**



Precast Terrazzo composed of marble chips and Portland cement, ground smooth and sealed; base floor is pitched toward the drain; wheelchair access open end; three sides have galvanized tiling flanges extending 1-1/2" above 1-1/2" wide shoulder; integral drain with stainless steel strainer is provided for caulked connection to a 2" pipe

Image shown: SBADA-36-3F

MODEL VARIATIONS

SBADA-36-3F	36" x 36" ID square base (3 sides flanged)
SBADA-6030-3F	60" x 30" ID rectangular base (3 sides flanged)
SBADA-6036-3F	60" x 36" ID rectangular base (3 sides flanged)
SBADA-6432-3F	64" x 32" ID rectangular base (3 sides flanged)
SBADA-6438-3F	64" x 38" ID rectangular base (3 sides flanged)

SHOWERS

Please visit www.acorneng.com for most current specifications.



Terrazzo-Ware® Model SBWA Series **Wheelchair accessible shower base**

Precast Terrazzo composed of marble chips and Portland cement, ground smooth and sealed; base floor is pitched toward the drain; entrance opening with 12" wide 9° pitched threshold with 6" stainless steel cap; three sides have galvanized tiling flanges extending 1-1/2" above shoulder; integral drain with stainless steel strainer is provided for caulked connection to a 2" pipe NOTE: NOT ADA compliant

Image shown: SBWA-6048-3F

MODEL VARIATIONS

SBWA-36-3F	36" square base (3 sides flanged)
SBWA-48-3F	48" square base (3 sides flanged)
SBWA-60-3F	60" square base (3 sides flanged)
SBWA-6048-3F	60" x 48" rectangular (3 sides flanged)
SBWA-4270-3F	42" x 70" (3 sides flanged)
SBWA-4870-3F	48" x 70" (3 sides flanged)
SBWA-6070-3F	60" x 70" (3 sides flanged)



Terrazzo-Ware® Model SBADAR Series **Shower base with ADA compliant ramp**



Precast Terrazzo composed of marble chips and Portland cement, ground smooth and sealed; base floor is pitched toward the drain; entrance opening with 12" wide 5° pitched threshold with 6" stainless steel cap; three sides have galvanized tiling flanges extending 1-1/2" above shoulder; integral drain with stainless steel strainer is provided for caulked connection to a 2" pipe.

Image: SBADAR-6036-3F

MODEL VARIATIONS

SBADAR-36-3F	36" ID square base (3 sides flanged)
SBADAR-6030-3F	60" x 30" ID (3 sides flanged)
SBADAR-6036-3F	60" x 36" ID (3 sides flanged)
SBADAR-6432-3F	64" x 32" ID (3 sides flanged)
SBADAR-6438-3F	64" x 38" ID (3 sides flanged)



Please visit www.acorneng.com for most current specifications.

ACCESSORIES



All products in this section are recyclable and manufactured with reclaimed materials



Shower-Ware® Model 1103 Series ADA compliant folding shower seat

Seat materials as specified with type 304 satin finish stainless steel frame. 33-1/2" long, 13-1/2" section is 19-1/2" wide while rest is 14-1/2" wide

Image shown: 1103-22

MODELS

19 1/2" section - left **19 1/2" section - right**

1103-11	1103-12	2" Naughyde cushion w/ plywood backing
1103-21	1103-22	Phenolic stats with teak finish
1103-31	1103-32	Stainless steel



Grab Bars Model 1108 and 1109 Series ADA compliant grab bars

1-1/2" outer diameter 304 stainless steel tubing with 3" diameter wall flanges counter sunk for furnished 2" long stainless steel vandal resistant screws. Suicide resistant models are available with a 14 gage closure plates welded to bottom of the bar.

Large image shown: 1108-4 & 1108-5

MODELS

Standard **Suicide Resistant**

1108-1	1109-1	24" length
1108-2	1109-2	30" length
1108-3	1109-3	2 wall grab bar
1108-4	1109-4	36" length
1108-5	1109-5	42" length
1108-6	1109-6	48" length



1109 closeup



Grab Bars Model 1110 Series Suicide Resistant grab bars

1-1/2" outer diameter 304 stainless steel tubing with a 14 gage closure plate welded to bottom of the bar. Grab bar is furnished with 2" long stainless steel vandal resistant screws.

Large image shown: 1110-5

MODELS

Standard

1110-1	24" length
1110-2	30" length
1110-3	2 wall grab bar
1110-4	36" length
1110-5	42" length
1110-6	48" length

ACCESSORIES

Please visit www.acorneng.com for most current specifications.



Penal-Ware® – Mirrors 1810 Series - Framed mirrors

14 gage 304 stainless steel frame; mirror constructed from type 400 stainless steel polished to a mirror finish and mounting hardware. Optional -MPG Plexiglas or -MTG tempered glass available.

Image shown: 1810

MODEL VARIATIONS

Rear Mount Front Mount

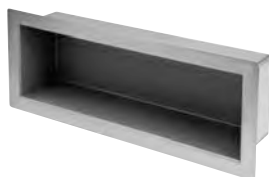
1810	1811	12" x 16" dimension
1812	1813	12" x 22-1/2" dimension (22-1/2" height recommended for handicap use)



Penal-Ware® – Mirrors Model 1817 – Integral framed mirror

18 gage type 400 bright annealed stainless steel integral framed mirror 11-1/4 x 17-1/4 for front mount installation with mounting hardware.

Image shown: 1817



Penal-Ware® - Recessed Shelf Model 1820 – Recessed shelf

304 stainless steel recessed shelf for rear mount chase applications with mounting hardware

Image shown: 1820



Penal-Ware® - Surface Mount Shelves 1821 Series – Surfaced mounted shelf

304 stainless steel surface mounted shelf for rear mount chase applications with mounting hardware

Image shown: 1821

MODEL VARIATIONS

1821	Plain shelf
1822	Shelf with slots for toothbrushes

Ligature Resistant Bathroom Accessories?

See Whitehall Manufacturing for a complete line of ligature resistant products through its BestCare product line. Whitehall has additional products for healthcare facilities including Patient Care Units (Care-Ware), Scrub Sinks, Infection Prevention Sinks, Bariatric Toilets, and Hydrotherapy.



www.whitehallmfg.com



Whitehall® Manufacturing
Manufacturer of Healthcare and Rehabilitation Products since 1946



Penal-Ware® - Shelving 1823 Series - Bookshelf

304 Stainless Steel Bookshelf for front and rear mount applications with auto-release clothes hooks and mounting hardware, for rear mount units. Option -ECH Econo clothes hook available

Image shown: 1824

MODEL VARIATIONS

Rear Mount	Front Mount
------------	-------------

1823	1824	Shelf with four clothes hooks
------	------	-------------------------------

1825	1826	Shelf only
------	------	------------



Penal-Ware® - Clothes Hooks 1827 Series – Clothes Hook Panels

304 Stainless Steel Clothes Hook Panels for front and rear mount applications with mounting hardware, for rear mount units, hardware. Option -ECH Econo clothes hook available

Image shown: 1830

MODEL VARIATIONS

Rear Mount	Front Mount
------------	-------------

1827	1828	Panel with four clothes hooks
------	------	-------------------------------

1829	1830	Panel with single auto release clothes hook
------	------	---



1828-ECH



Penal-Ware® Accessories - Recessed Soap Dish Model 1832 – Recessed soap dish

Recessed 304 stainless steel soap dish with mounting hardware, for rear mount application

Image shown: 1832



1840-FA

Penal-Ware® Accessories - Recessed Paper Holder 1840 Series – Recessed toilet paper holder

14 gage 304 stainless steel holder with integral beveled front panel, recessed cylinder to house single roll of toilet paper

Large image shown: 1840

MODEL VARIATIONS

1840	Rear mount
------	------------

1840-FA	Front mount
---------	-------------

ACCESSORIES

Please visit www.acorneng.com for most current specifications.



Dura-Ware® Model 2802 **Flush valve cover with flush valve**

16 gage, type 304 stainless steel with glass blast sain finish interior, 6 removalble wall brackets with vandal resistant screw, cast bronze body exposed fype flush valve, non-hold open metal pushbutton, union angle stope and vaccum breaker

Image shown: 2802-FV-PHL



Dura-Ware® Model 2802 **Flush valve cover with flush valve**

16 gage 304 stainless steel recessed wall box and internal flush valve with removable front panel made from 14 gage 304 stainless steel

Image shown: 2803-1-FV



Dura-Ware® Model 2898 **Flush valve access panel**

20 gage galvanized wall frame/sleeve and 14 gage 304 stainless steel removable front panel punched for flush valve (not included) which is designed to be installed inside the

Image shown: 2898



Replace-Ware Model 3395 Series **Replacement anchoring assembly**

Anchoring assembly for use with flushing inlets and replacement lavy waste outlet fittings for additional support and anchoring consisting of threaded anchoring pipe, thrust plate and adjusting screws.

Image shown: 3395



Valves Model 03 & 04 Air-Control valve assembly

Pneumatically operated, pushbutton valve using atmospheric air. Pushbutton is vandal-resistant and requires less than 5 pounds to activate valve. Valve is direct acting, non-metering type. Also includes 0.50 GPM flow control and indexed pushbutton. Applicable to all lavy and comby fixtures with existing "D" 7/8 punch

Image shown: 03-M

MODEL VARIATIONS

03	Non-metering, single temperature
04	Non-metering, Hot & Cold
03-M	Metering, single temperature
04-M	Metering, Hot & Cold



Valves Model R03 & R04 Replacement Air-Control valve assembly

Pneumatically operated, pushbutton valve using atmospheric air. Pushbutton is vandal-resistant and requires less than 5 pounds to activate valve. Valve is direct acting, non-metering type. Also includes 0.50 GPM flow control and indexed pushbutton, pushrods, stainless steel –BPH hemispherical penal bubbler and anti-rotation plate when applicable. Applicable to most fixtures.

Image shown: R04-MH

MODEL VARIATIONS

R03	Non-metering, single temperature
R04	Non-metering, Hot & Cold
R03-M	Metering, single temperature
R04-M	Metering, Hot & Cold



Valves Model EVS Master-Trol water management system

Computer networked valve management system includes electronic valve controller, solenoid valve assemblies with branch box and pressure switch, pneumatic stainless steel pushbuttons, and interface hardware.

APPLICATIONS

EVS1	Single temperature (lavatories, showers, drinking fountains)
EVS2	Hot & Cold (lavatories)
EVSFTE	Flood-Trol (toilets, combys)
EVSFV	Flush valve (toilet, urinals)
EVSP1	Single temperature w/piezo buttons (lavatories, showers, drinking fountains)
EVSP2	Hot & Cold w/piezo buttons (lavatories)
EVSPFV	Flush valve w/piezo buttons (toilet, urinals)



Valves REVS

Master-Trol Replacement Valve Assembly - Lavy & Comby Fixtures

The Master-Trol Valve assembly replaces existing valve and bubbler on stainless steel lavy and comby fixtures. Valve assembly includes a 0.5 GPM flow control, indexed pushbutton(s), hemispherical bubbler and an anti-rotation plate or escutchen if needed.

Image shown: REVS2



APPLICATIONS

REVS1	Electronic Valve System, Single Temp
REVSP1	Electronic Valve System, Single Temp w/Piezo Pushbutton
REVS2	Electronic Valve System, Hot & Cold
REVSP2	Electronic Valve System, Hot & Cold w/Piezo Pushbutton

Valves REVSFV

Master-Trol Replacement Flush Valve Assembly - Toilet & Comby Fixtures

The Master-Trol Flush Valve assembly replaces existing valve on stainless steel toilet and comby fixtures. Valve assembly includes a solenoid flush valve and pushbutton.

Image shown: REVSPFV



APPLICATIONS

REVSFV	Electronic Flush Valve
REVSPFV	Electronic Flush Valve w/Piezo Pushbutton

Valves Model MVC

Time-Trol timing cycle valve

Timing cycle valve includes a pneumatic actuator requiring less than 5 pounds of push on the fixture pushbutton to activate the valve. The pneumatic actuator tube easily attaches to the included modular valve controller. Controller is needed for each button activation.

Large image shown: -MVC1



MVC-BAT controller

APPLICATIONS

MVC1	Single temperature (lavatories, showers, drinking fountain)
MVC2	Hot & Cold (lavatories)
MVCFV	Flush valve (toilet, urinals)
MVCFV-FTE	Flood-Trol (toilets)
MVC1-BAT	Battery powered; Single temperature
MVC2-BAT	Battery powered; Hot & Cold



Replace-Ware Model 3382 Series Replacement Air Control valve assembly

Retro-fit Air Control valve assembly for existing china or aluminum fixtures only with an integral bubbler. Assembly includes Air Control valve assembly on a plate, pushrod activated pushbutton(s) and bubbler connection.

Image shown: 3383-MH

MODEL VARIATIONS

3382	Single Temperature
3383	Hot & Cold



Replace-Ware Model 3386 Series Replacement Retro-Air valve assembly

Retro-Fit valve assembly for specific existing Acorn, Metcraft or Willoughby Models to use on existing valve bodies. Assembly includes Air Control Servomotor and push button assembly.

Image shown: 3386-RAA-M

MODEL VARIATIONS

3386	Single Temperature
3387	Hot & Cold



Replace-Ware Model 3389 Replacement Time-Trol Plus concealed flush valve assembly

Flush valve assembly for replacement of existing concealed flush valve on a toilet or comby with a a battery powered electronic system. Assembly includes a hydraulic flush valve, solenoid control valve, Time-Trol Plus battery powered control module, 10 feet of tubing and pushbutton assembly.

Image shown: 3389

HOSE BOXES

Please visit www.acorneng.com for most current specifications.



All products on this page are recyclable and manufactured with reclaimed materials



All products with -SSLF option meet with lead free requirements where the wetted surface of this product contacted by water contains less than 0.25% lead.



8109

Hose/Supply Boxes Model 8100 Series Lumaloy recessed hose supply box

Cast Lumaloy recessed hose box, 3-3/4" deep 8" sq. interior and 9-1/4" exterior, cartridge operated valve(s), removable loose key wheel handle, screwdriver stop and vandal resistant lock shield bonnet. Optional -SSLF stainless steel valve option is available where wetted surface contacted by water contains less than 0.25% lead and meets California and Vermont lead free laws.

Large image shown: 8104

MODEL VARIATIONS

W/o breaker	W/breaker	
8101	8102	Single temperature hose box
8103	8104	Single temperature hose box with door and frame
8106	8107	Hot & Cold hose box
8108	8109	Hot & Cold hose box with door and frame

Hose/Supply Boxes Model 8120 Series Hose Valves



8130-CP



8136-CP

Rough brass valves with 3/4" NPT female inlets, cartridge operated, lock shield bonnet and removable wheel handles. Optional -CP polished chrome plated, -CR rough chrome plated finishes are available.

Large image shown: 8120-CR

MODEL VARIATIONS

W/o breaker	W/breaker	
8120	8121	Bent nose with flange for wall installation
8125	8126	Bent nose valve
8130	8131	Straight nose valve
8135	8136	Inverted nose valve

Hose/Supply Boxes Model 8140 Series Stainless steel recessed hose box



8156

18 gage 304 stainless steel recessed hose box 3-5/8" Deep 8-5/8" sq. interior and 10-1/2" exterior, wall flange cartridge operated valve(s), removable loose key wheel handle, screwdriver stop and vandal resistant lock shield bonnet. Optional -SSLF stainless steel valve option is available where wetted surface contacted by water contains less than 0.25% lead and meets California and Vermont lead free laws.

Image shown: 8151

MODEL VARIATIONS

W/o breaker	W/breaker	
8140	8141	Single temperature hose box
8150	8151	Single temperature hose box with door
8145	8146	Hot & Cold hose box
8155	8156	Hot & Cold hose box with door



Please visit www.acorneng.com for most current specifications.

HOSE BOXES

Hose/Supply Boxes Model 8160 Series

Non-Freeze integral vacuum breaker single temp recessed hose box

18 gage 304 stainless steel recessed hose box is intended to provide positive freeze resistance with the valve mounted in the interior of a building. Valve shall be a dual check valve type and features an integral vacuum breaker, 1/4 turn ceramic full flow valve with ergonomic designed wheel handle and a screwdriver operated stop.

Image shown: 8160



MODEL VARIATIONS

8160	Recessed Hose Box with wall flange and door
8161	Recessed Hose Box with wall flange less door

Hose/Supply Boxes Model 8170 Series

Stainless steel recessed hose box with Lumaloy non-skid top for floor

Cast Lumaloy recessed hose box for typical floor installations with 4" deep, 8-5/8" sq. interior and 10" exterior including diamond tread skid resistant removable frame and locking door, cartridge operated valve(s), loose key wheel handle(s), screwdriver stop(s), and vandal resistant lock shield bonnet(s). Optional –SSLF stainless steel valve option is available where wetted surface contacted by water contains less than 0.25% lead and meets California and Vermont lead free laws.

*Check local code authority if vacuum breaker meet requirements below floodline.

Image shown: 8170



MODEL VARIATIONS

W/o breaker W/breaker

8170	8171	Single temperature hose box
8175	8176	Hot & Cold hose box

Hose/Supply Boxes Model 8180 Series

Stainless steel recessed hose box with waste outlet

18 gage 304 stainless steel recessed supply box with waste outlet, 3-5/8" Deep 8-5/8" sq. interior and 10-1/2" exterior wall frame, including cartridge operated valve(s), removable loose key wheel handle(s), screwdriver stop(s) and vandal resistant lock shield bonnet(s) and 2" SPS waste outlet. Optional –SSLF stainless steel valve option is available where wetted surface contacted by water contains less than 0.25% lead and meets California and Vermont lead free laws.

Image shown: 8186



MODEL VARIATIONS

W/o breaker W/breaker

8180	8181	Single temperature hose box
8185	8186	Hot & Cold hose box



See Murdock for
additional hydrant products

www.murdockmfg.com



HOSE BOXES

Please visit www.acorneng.com for most current specifications.



Hose/Supply Boxes Model 8190 Series

Stainless steel recessed dialysis supply and waste box

18 gage 316 stainless steel recessed dialysis box 3-3/4" deep 8-5/8" sq. interior and 10-1/2" exterior 304 stainless steel wall flange, PVC ball valve(s) with viton seals, discharge hose bracket with rubber grommets and 2-3/8" waste outlet. Optional -SV stainless steel ball valve is an alternative to the standard PVC valve. Large image shown: 8190



8196-SV

MODEL VARIATIONS

8190	Two valves supply
8191	One valve supply
8195	Two valve supply with locking door
8196	One valve supply with locking door



Hose/Supply Boxes Model 8198

Stainless steel recessed laser supply and waste box

Recessed 18 gage 304 stainless steel laser supply and waste box, 7" deep 11" sq. interior and 12-1/2" exterior including removable wall frame with locking door, cartridge operated supply valve with quick disconnect and vacuum breaker, screwdriver stop, vandal resistant lock shield bonnet; waste connection is quick disconnect fitting with positive



Hose/Supply Boxes Model 8200

Stainless steel remote supply box

18 gage 304 stainless steel remote supply box 5" deep 8-5/8" sq. with locking door, cartridge operated mixing valve, concealed stops, atmospheric vacuum breaker.

Large image shown: 8200



8215

MODEL VARIATIONS

W/temp gage	W/o temp gage	
8200	8201	Recessed supply box with 10-1/2" sq. frame
8205	8206	Surface mounted supply box
8210	8211	Recessed dual use supply box with 10-1/2" sq. frame with diverter and 3/4" male hose outlet
8215	8216	Surface mounted supply box with diverter and 3/4" male hose outlet



Hose/Supply Boxes Model 8200-1

Recessed stainless steel box with door & wall flange

Recessed 18 gage 304 stainless steel blank box 4" deep 8-1/2" sq. with 10-1/2" sq. wall flange and lockable, removable door, 2" SPS waste outlet

Image shown: 8200-1



Hose/Supply Boxes Model 8292

Stainless steel wall frame with door

18 gage 304 stainless steel frame with locking, removable door

Image shown: 8292

[illegible]

[illegible]



800-488-8999 • 626-336-4561 • **FAX** 626-961-2200



Est. 1954
ACORN ENGINEERING COMPANY
Manufacturer of Engineered Products

ACORN ENGINEERING COMPANY

Engineered Plumbing Products

P.O. Box 3527 • City of Industry, CA 91744-0527 U.S.A.

800-488-8999 • 626-336-4561 • Fax 626-961-2200

www.acorneng.com



MORRIS GROUP
INTERNATIONAL

www.morrisgroup.co

Innovative Spirit and Engineering Foundation

"What sets us apart from competitors is our engineering and spirit. We have a 'can-do' spirit. If you ask us to do something, we will do it or figure out how to do it. That's the part our customers like, that's the part we like."

- Don Morris, President and CEO

MORRIS GROUP INTERNATIONAL

ACORNGENCON
PLASTICS

ACORN-GENCON PLASTICS, LLC

Injection Molded Products

13818 Oaks Avenue • Chino, CA 91710 U.S.A.

Tel 909-591-8461 • Fax 909-628-7465

www.acorn-gencon.com



ACORNVAC, INC.

Vacuum Plumbing Systems

13818 Oaks Avenue, Chino, CA 91710

Tel. 800-591-9920 • Tel. 909-902-1141 • Fax: 909-902-5041

www.acornvac.com



CHRONOMITE LABORATORIES, INC.

Tankless Electric Water Heaters

P.O. Box 3527 • City of Industry, CA 91744-0527 U.S.A.

Tel 800-447-4962 • Fax 626-937-4279

www.chronomite.com



ELMCO GROUP

Manufacturer Representatives

P.O. Box 3787, City of Industry, CA 91744

Tel 626-333-9942 • Fax 626-961-3813

www.morrisgroup.co



JAY R. SMITH MFG. CO.®

Plumbing and Drainage Products

P.O. Box 3237 • Montgomery, AL 36109-0237

Tel 800-467-6484 • 334-277-8520

Fax 334-272-7396

www.jrsmith.com



MORRIS INDUSTRIES MEXICO, S. DE R.L. DE C.V.

Central and Latin America Manufacturing and Sales

Maquiladoras #1387-1 Col.Cd. Industrial Tijuana, B.C., C.P. 22444

Tel 011-52-664-623-4580 • Fax 011-52-664-623-4590

www.morrisgroup.co



MORRIS PROPERTY MANAGEMENT COMPANY

Construction, Interior Design, Landscaping and Maintenance

15058 Proctor Avenue • City of Industry, CA 91746

Tel 626-855-4888 • Fax 626-855-4864

www.morrispropertiesmgt.com



MURDOCK MANUFACTURING

Drinking Fountains and Hydrants

P.O. Box 3527 • City of Industry, CA 91744-0527 U.S.A.

Tel 800-45-DRINK • 626-333-2543 • Fax 626-855-4860

www.murdockmfg.com



POTTER ROEMER

Fire Protection Equipment

P.O. Box 3527 • City of Industry, CA 91744-0527 U.S.A.

Tel 800-366-3473 • Fax 626-937-4777

www.potterroemer.com



WHITEHALL MANUFACTURING

Hospital and Rehabilitation Products

P.O. Box 3527 • City of Industry, CA 91744-0527 U.S.A.

Tel 800-782-7706 • 626-968-6681 • Fax 626-855-4862

www.whitehallmfg.com